



14 Eltham Court Wodonga VIC

3 1 2

Situated at the end of a quiet court, this three bedroom home is set on a 733m² block backing onto local parklands.

The elevated rear deck provides a great place to enjoy the outlook, whilst entertaining friends & family.

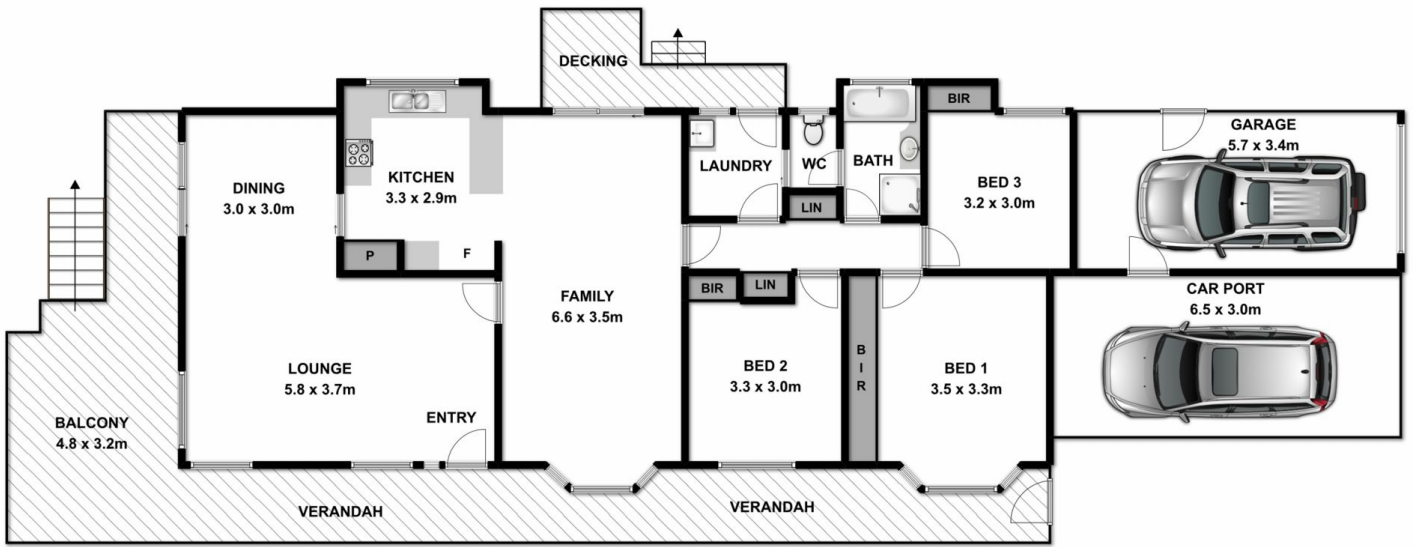
With two living areas that encompass the central kitchen, there is plenty of space to cater for all types of families, whilst the ducted cooling & heating ensure comfort all year round.

Also on offer is the low maintenance gardens & undercover two car accommodation, which completes the full package. Come see why you can make this house your home

Price : \$ 283,000
Land Size : 733 sqm
View : <https://www.wodongarealestate.com.au/sale/vic/north-eastern/wodonga/residential/house/5834822>



Mark Rosevear
0260 561 888



Measurements are approximate. Not to scale. For illustrative purposes only.