



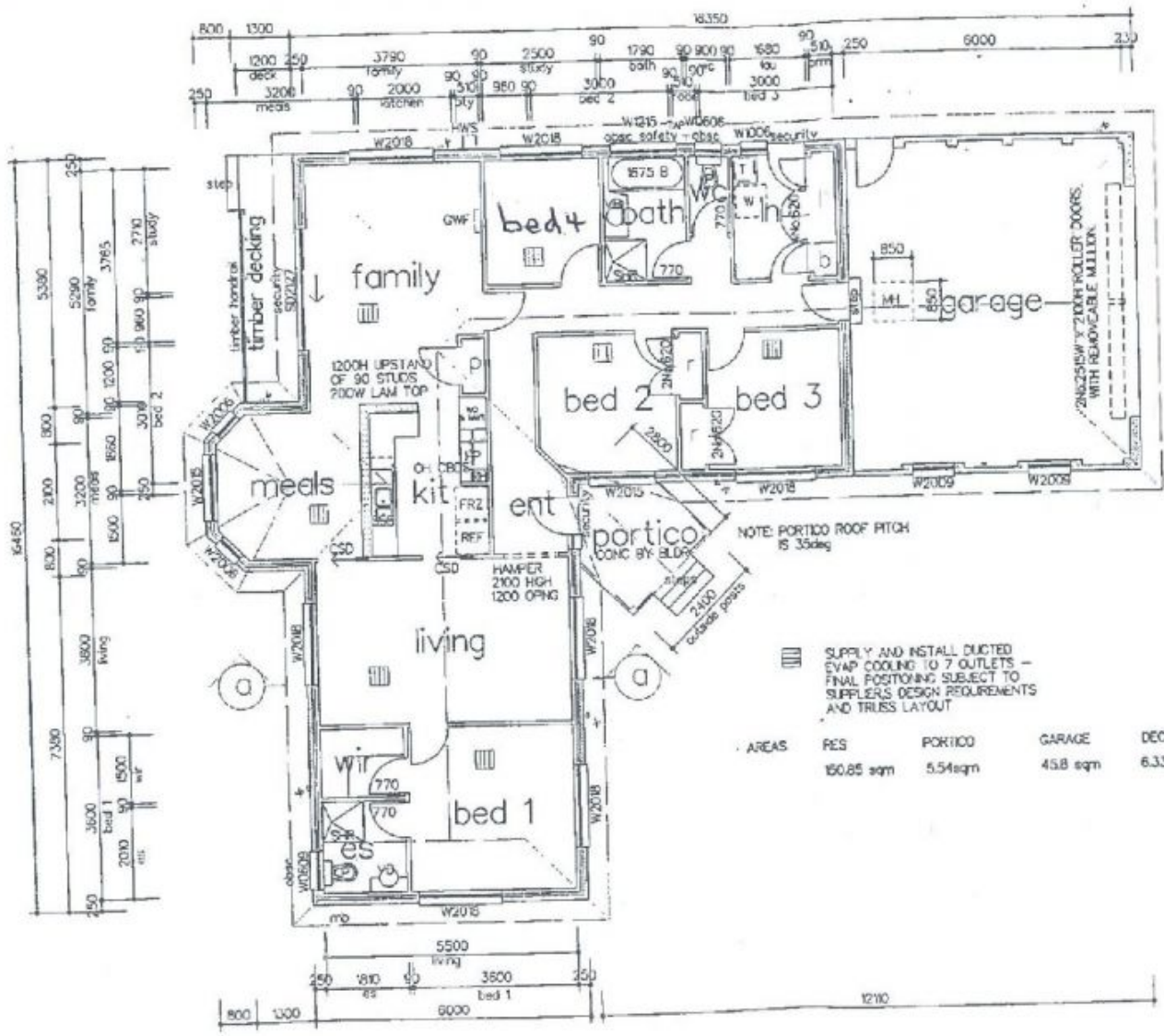
**1 Lytham Court Wodonga VIC**

4 2 2

Backing onto Wodonga Golf Course this value home offers a beautiful country backdrop or direct access to the golf course. The many features include:

- \* Quality built by CNC homes
- \* Master bedroom with en-suite and walk in robe
- \* Formal lounge and separate tiled family room
- \* Spacious kitchen with dishwasher, separate meal area
- \* Comforts of ducted heating and cooling throughout
- \* Double lock up garage with remote and internal access
- \* Outstanding investment - Currently let at \$340 per week

**Land Size** : 767 sqm  
**View** : <https://www.wodongarealestate.com.au/sale/vic/north-eastern/wodonga/residential/house/5835136>



SUPPLY AND INSTALL DUCTED EVAP COOLING TO 7 OUTLETS - FINAL POSITIONING SUBJECT TO SUPPLIERS DESIGN REQUIREMENTS AND TRUSS LAYOUT

| AREAS | RES        | PORTICO | GARAGE   | DECKING  |
|-------|------------|---------|----------|----------|
|       | 160.85 sqm | 5.54sqm | 45.8 sqm | 6.33 sqm |

J.L. ... .. db. 1870 250

| Area | Residence | Verandah | Carport/Garage | Pergola/Portico |
|------|-----------|----------|----------------|-----------------|
|      |           |          |                |                 |