



2/10 McEwen Crescent Wodonga VIC

2 1 1

This beautifully presented unit offers so much more than the average. Large leafy, private yard, raked ceilings throughout beaming with light, recently updated carpet and paint and the ability to just move in, put the furniture down and enjoy. The other features include-

- * Generous size lounge/dining
- * Both bedrooms with built in robes
- * Gas wall furnace and split system heating/cooling
- * Escape/retreat outside to the front verandah/fernery or paved entertaining area
- * Single lock up garage with internal and remote access
- * Superb Federation Park location close to all facilities
- * For investors previously let at \$220 per week

Price : \$ 187,000

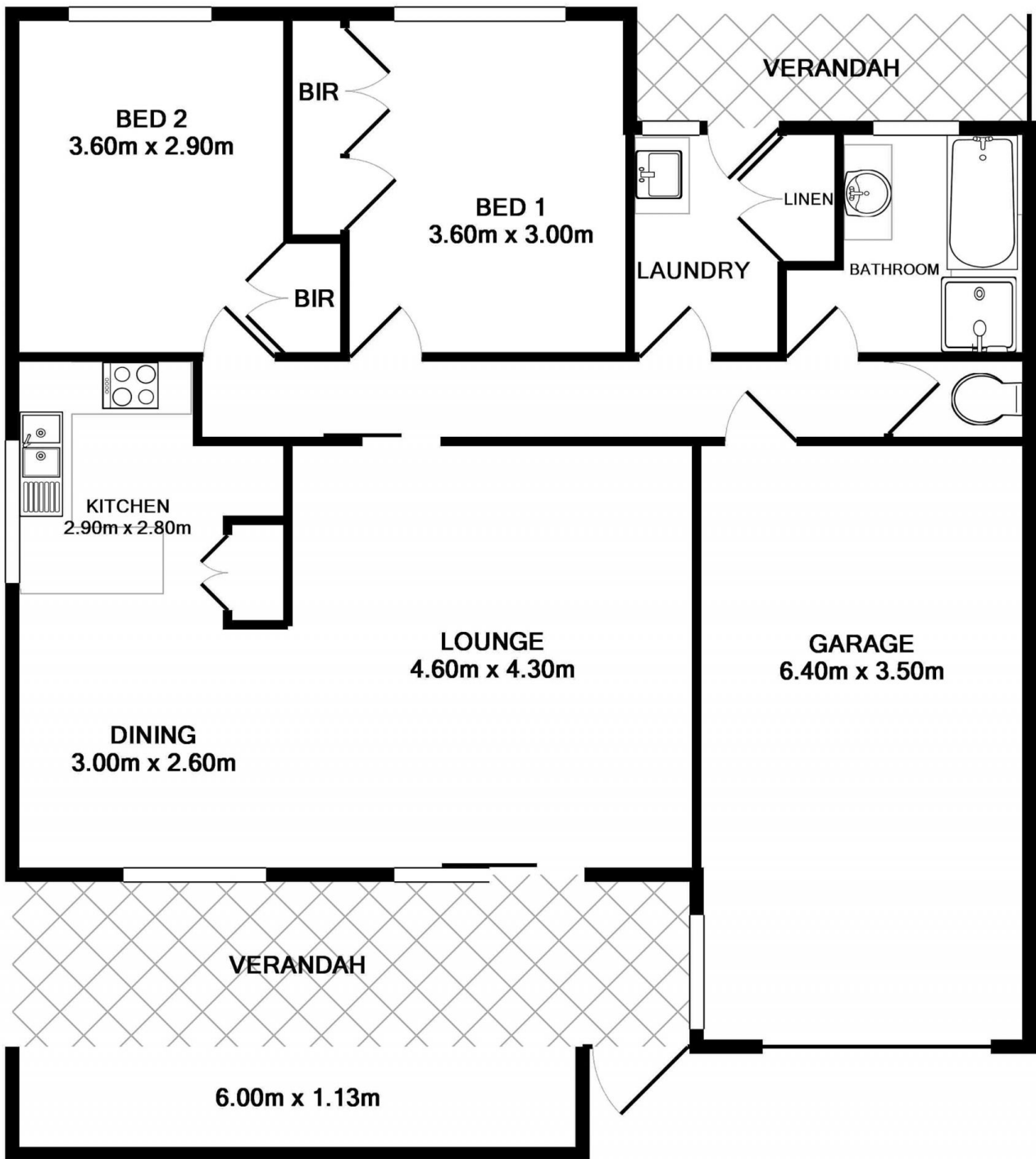
View : <https://www.wodongarealestate.com.au/sale/vic/north-eastern/wodonga/residential/unit/5835902>



Margy Meehan
0260 561 888



Clinton Harvey
0260 561 888



Measurements are approximate. Not to Scale. For Illustrative purposes only.