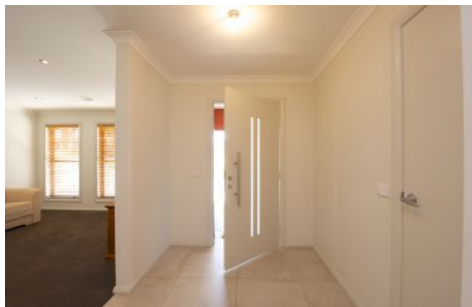




**wodonga real estate
bestagents**



23 Streets Road Wodonga VIC

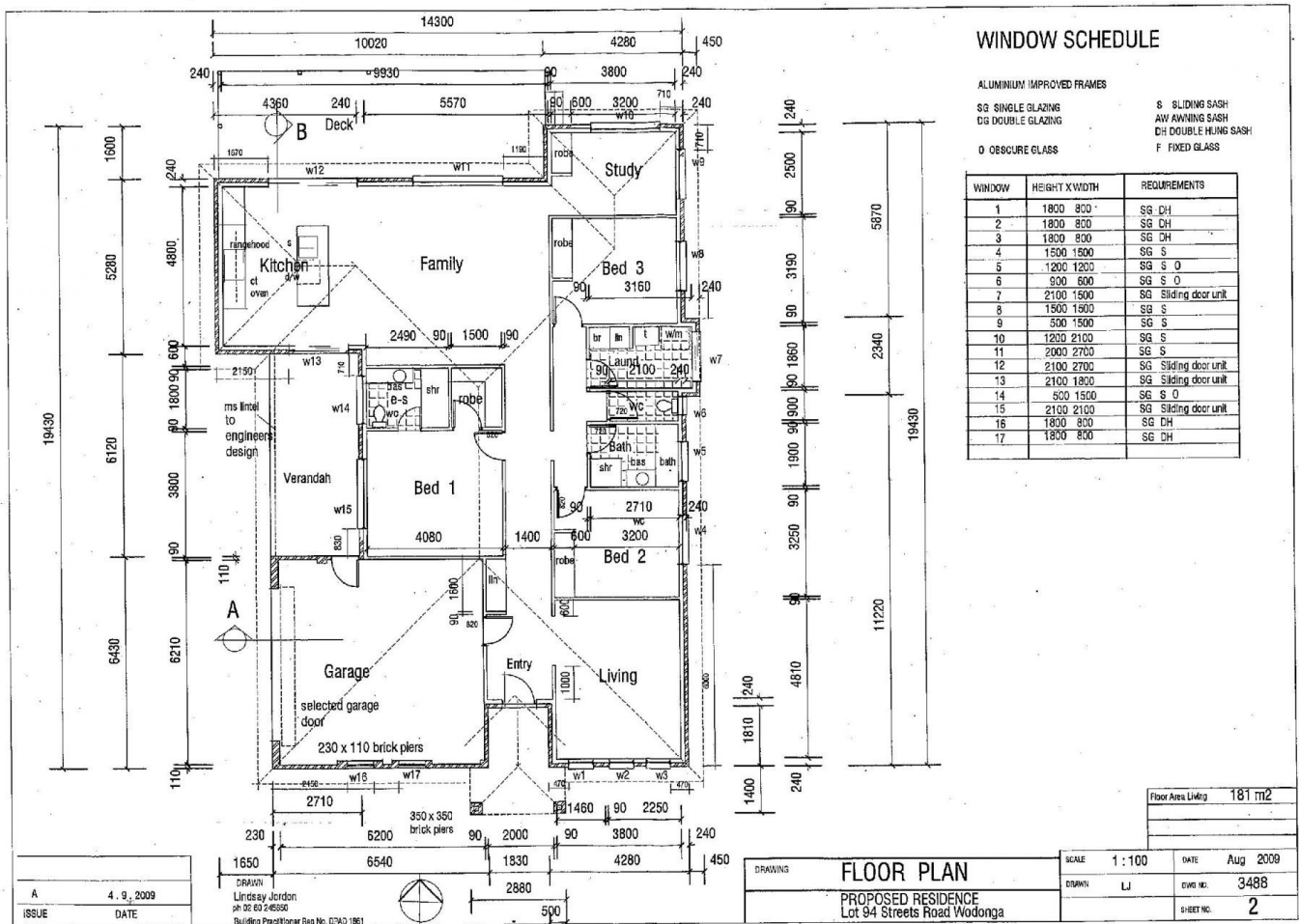
3 2 2

Constructed by a local builder who ensured attention to detail, this is a rare opportunity to purchase an amazing home in the highly sought after Wattle Glen Estate. Features include:

- * Three spacious bedrooms and study, main with walk in robe and en-suite
- * Open plan and light filled dining/living plus formal lounge
- * Beautiful modern kitchen with 2 pack finish, stainless steel 900mm appliances and slide out pantry for extra storage
- * Ducted heating and cooling throughout
- * Large laundry with linen/ broom and under bench storage
- * Lovely under main roof deck off master bedroom plus a massive north facing undercover deck for year round entertaining
- * Oversize double lock up garage with internal and rear

Land Size : 790 sqm
View : <https://www.wodongarealestate.com.au/sale/vic/north-eastern/wodonga/residential/house/5835955>

<https://www.wodongarealestate.com.au>



WINDOW SCHEDULE

ALUMINIUM IMPROVED FRAMES
 SG SINGLE GLAZING
 DG DOUBLE GLAZING
 O OBSCURE GLASS
 S SLIDING SASH
 AW AWNING SASH
 DS DOUBLE HUNG SASH
 F FIXED GLASS

WINDOW	HEIGHT X WIDTH	REQUIREMENTS
1	1800 800	SG DH
2	1800 800	SG DH
3	1800 800	SG DH
4	1500 1500	SG S
5	1200 1200	SG S O
6	900 600	SG S O
7	2100 1600	SG Sliding door unit
8	1500 1500	SG S
9	500 1500	SG S
10	1200 2100	SG S
11	2000 2700	SG S
12	2100 2700	SG Sliding door unit
13	2100 1800	SG Sliding door unit
14	500 1500	SG S O
15	2100 2100	SG Sliding door unit
16	1800 800	SG DH
17	1800 800	SG DH

Floor Area Living 181 m²

ISSUE	DATE
A	4.9.2009

DRAWN
 Lindsay Jordan
 architect
 Building Practitioner Reg No. 03901861



DRAWING
FLOOR PLAN
 PROPOSED RESIDENCE
 Lot 94 Streets Road Wodonga

SCALE	1:100	DATE	Aug 2009
DRAWN	LJ	DWG NO.	3488
		SHEET NO.	2