



4 Samantha Terrace Wodonga VIC

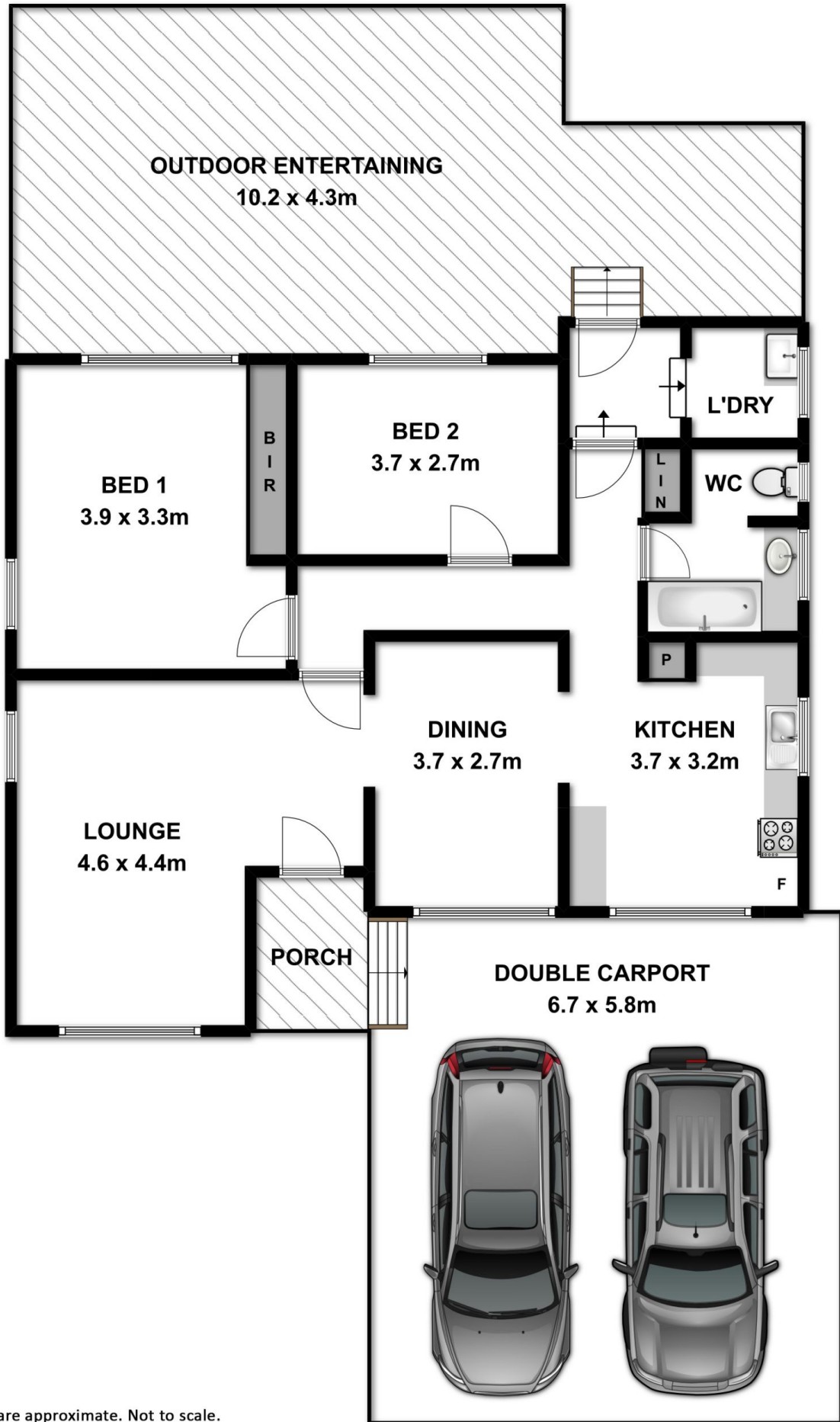
2 1 2

Great little starter for the investment portfolio.

Neat and tidy two bedroom home currently tenanted and renting for \$220 per week until February 2016.

So many little extras, including polished floors and great outdoor entertaining overlooking the hills of Wodonga.

Price : \$ 207,000
Land Size : 474 sqm
View : <https://www.wodongarealestate.com.au/sale/vic/north-eastern/wodonga/residential/house/5836121>



Measurements are approximate. Not to scale.
For illustrative purposes only.