



28 Elm Street Wodonga VIC

2 1 2

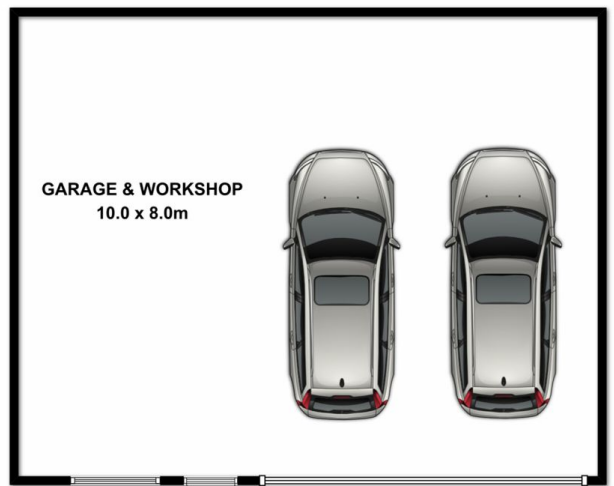
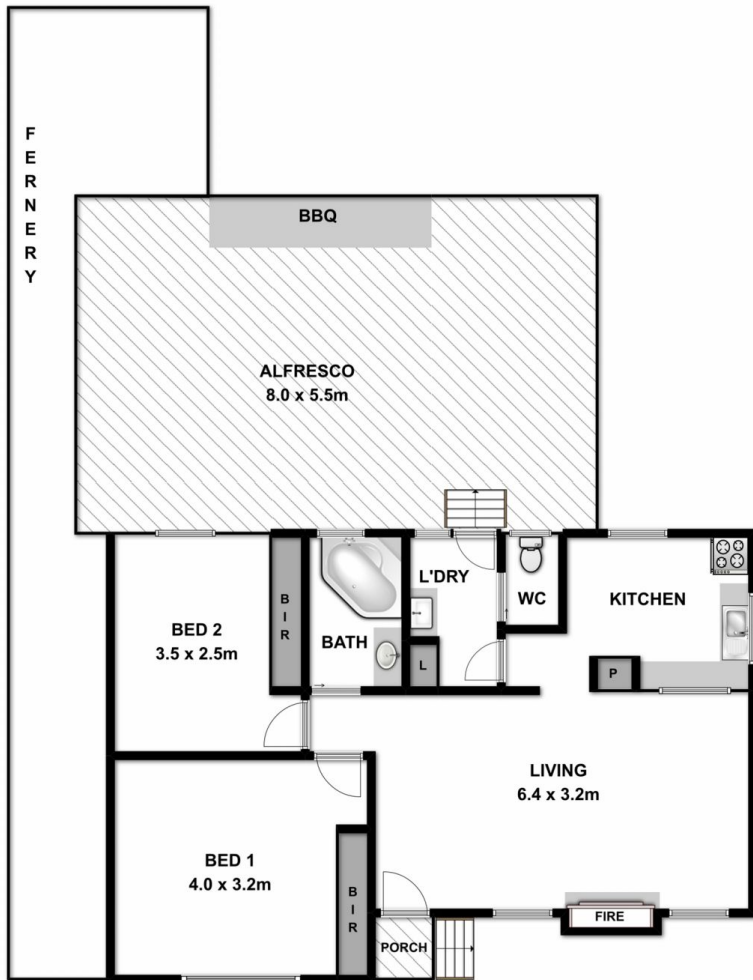
What a great start. Centrally located close to sporting facilities, hospital and schools. This will impress those entering the market for the first time or those seeking a great investment. Features include:

- * Two bedrooms with built in robes
- * Spacious lounge with polished floors
- * Fabulous outdoor entertaining area
- * Enclosed big shed
- * Hydronic heating
- * 668m² allotment
- * Let at \$250 per week to a great tenant or can be purchased vacant

Price : \$ 210,000
Land Size : 668 sqm
View : <https://www.wodongarealestate.com.au/sale/vic/north-eastern/wodonga/residential/house/5836345>



Margy Meehan
0260 561 888



*NOT IN ACTUAL POSITION

Measurements are approximate. Not to scale. For illustrative purposes only.