



9 Tourmaline Drive Wodonga VIC

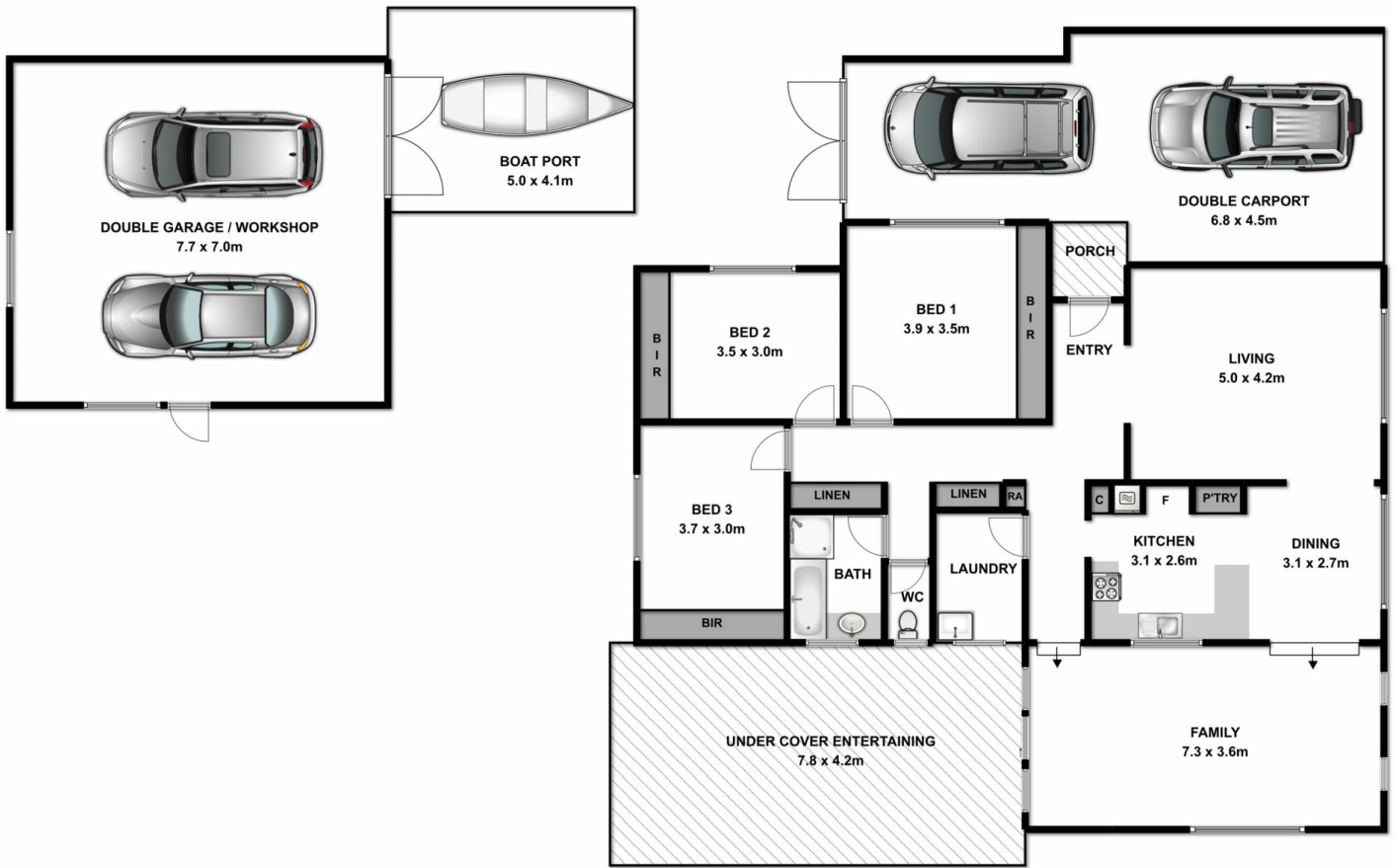
3 1 2

You'll be able to walk to the shops, doctors, cafes, pub, schools, leisure and tennis centre which are all within one kilometre from this immaculately presented property. Freshly painted, carpeted and tiled throughout in modern tones, the property on a 796m² block features three bedrooms with built in robes and beautifully renovated 2 pak kitchen with dishwasher and gas cook top. There are two living zones, full bathroom and ducted heating and cooling. Outside features a large undercover entertaining area, double carport, a boat or trailer port and yes - there is a man land with a powered 8 x 9 meter shed! The gardens are well maintained, secure and low maintenance. With not a thing to do and so close to everything, you will be impressed with this outstanding property.

Price : \$ 279,000
Land Size : 796 sqm
View : <https://www.wodongarealestate.com.au/sale/vic/north-eastern/wodonga/residential/house/5836357>



Mark Rosevear
0260 561 888



Measurements are approximate. Not to scale. For illustrative purposes only.