



4 Parkland Drive Wodonga VIC

5 2 1

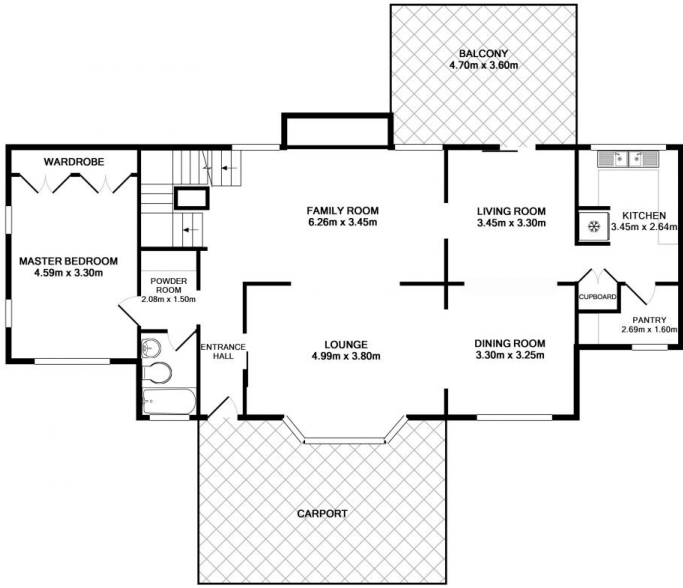
Ever dreamed of owning a property overlooking parkland, close to Central Wodonga, sporting facilities and schools? Dreams do come true!

Offering:

- * Five bedrooms
- * Three studies
- * Two bathrooms
- * Three living areas
- * Pool and the list goes on
- * ESR - \$330,000 to \$360,000

Price : \$ 339,000
Land Size : 806 sqm
View : <https://www.wodongarealestate.com.au/sale/vic/north-eastern/wodonga/residential/house/5836385>

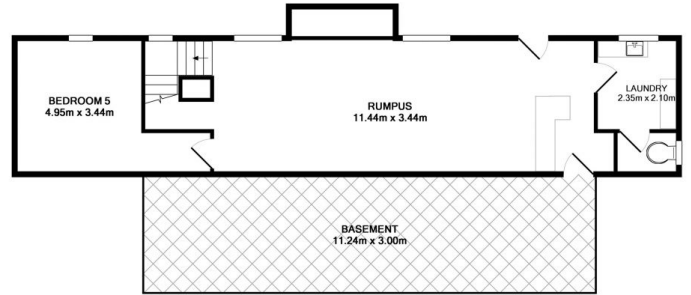
You have to see this property to believe it. Some updating is required however, the space, the size, the style and location are amazing.



GROUND FLOOR



1ST FLOOR



BASEMENT LEVEL

Measurements are approximate. Not to Scale. For illustrative purposes only.