



25-27 Wilkinson Drive Wodonga VIC

3 2 2

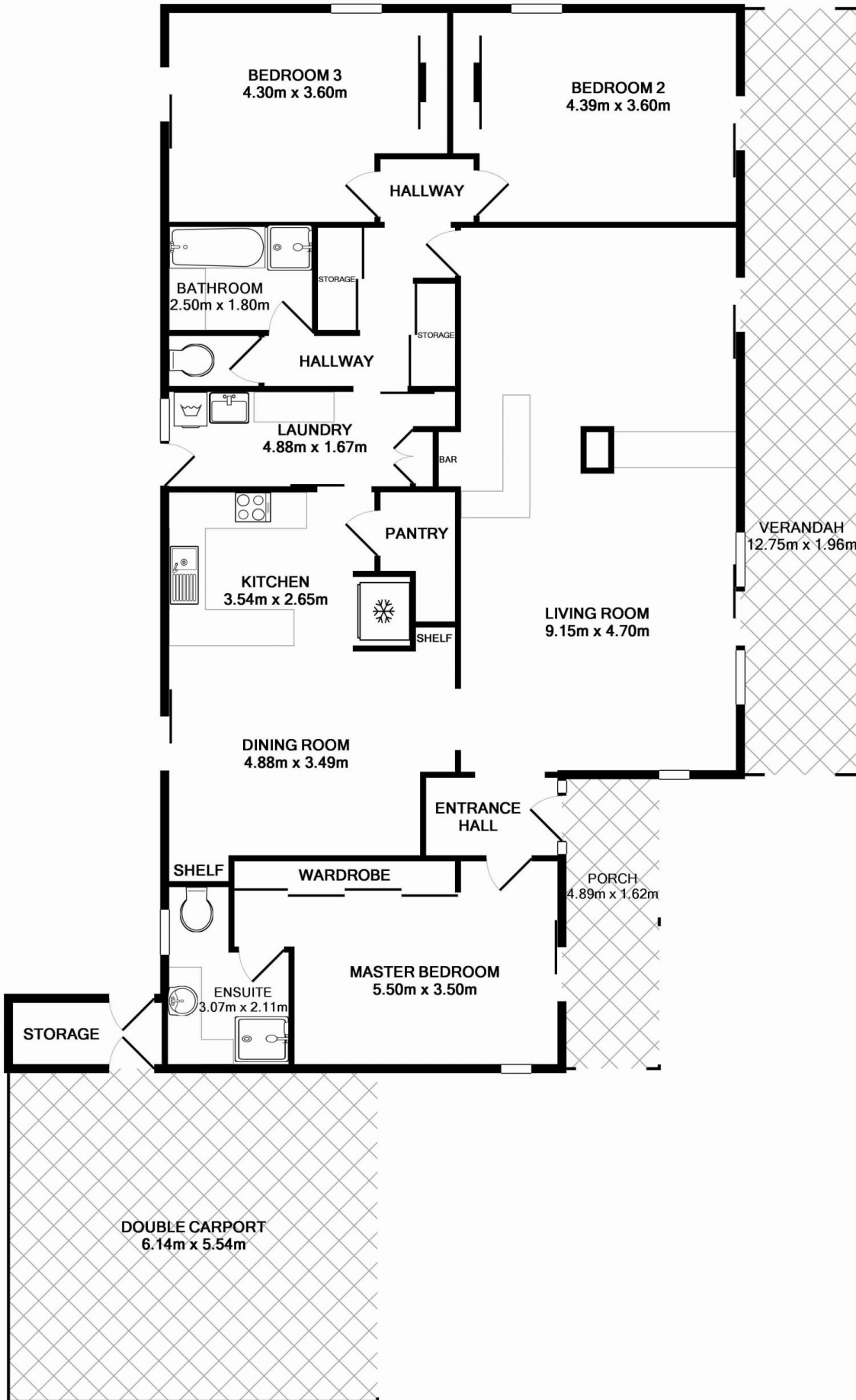
Located in one of Wodonga's sought after areas and surrounded by parkland, this architecturally designed home set on double allotment (house allotment approx 709m²) plus additional allotment of approx 632m²) would suit the most astute purchaser.

Offering three large bedrooms with built in robes, master with ensuite, original kitchen and separate dining area, large lounge with cedar windows overlooking Huon Creek.

So many features to mention including stunning timber lined cathedral ceilings, exposed brick walls, built in bar and ducted heating & cooling.

A must to inspect.

Price : \$ 405,000
Land Size : 1341 sqm
View : <https://www.wodongarealestate.com.au/sale/vic/north-eastern/wodonga/residential/house/5836395>



Measurements are approximate. Not to Scale. For Illustrative purposes only.