



6 Juniper Way Baranduda VIC

3 2 2

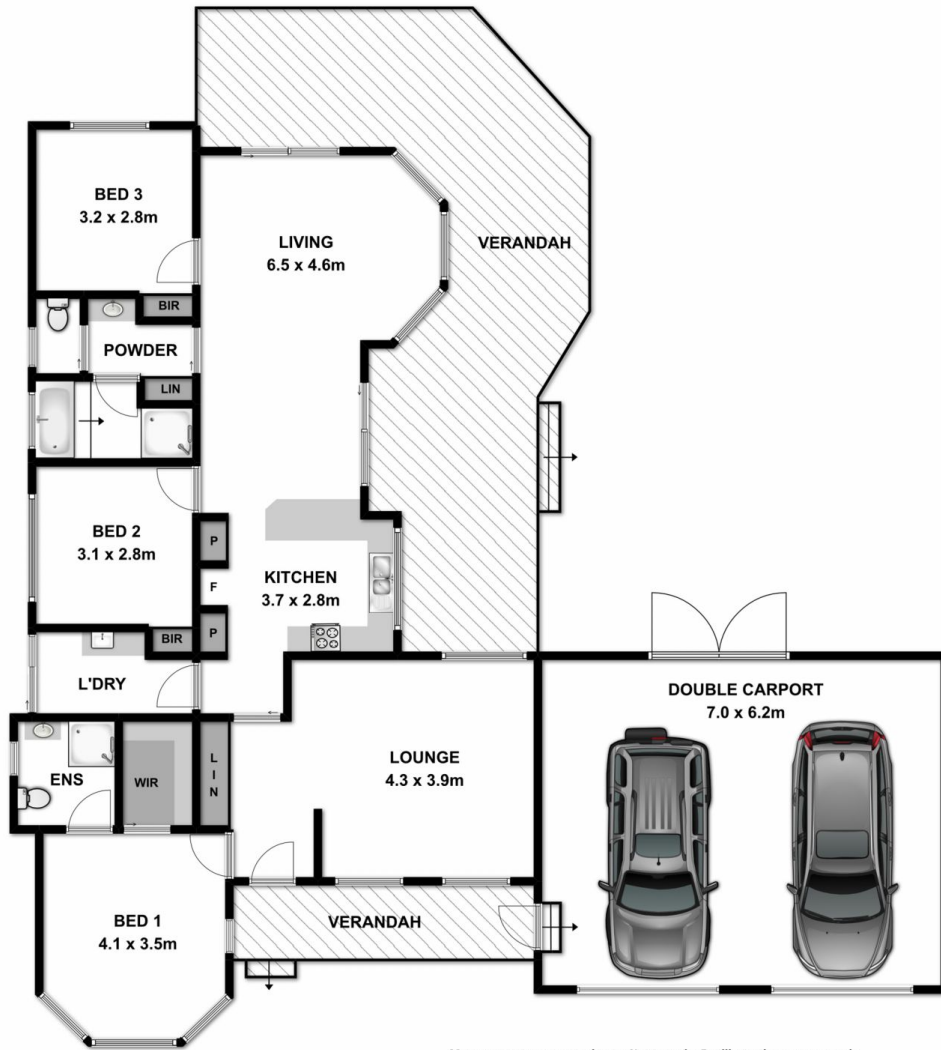
Combining a green field reserve opposite, glorious mountain views and a lush large backyard, nature's feel is all around you. A country atmosphere with city services the many quality features include-

- * Separate living areas of lounge and tiled family room
- * Massive verandah/outdoor entertaining area offering possibilities galore
- * Ducted evaporative cooling throughout, gas wall furnace and new split system to lounge room
- * 809m² yard ideal for a shed, pool or space for the whole family
- * Easy access to primary school, shops, sporting facilities and bus stop
- * For investors expected rental return of \$300 to \$320 per week.
- * Perfectly presented ready to enjoy.

Price : \$ 275,000
Land Size : 809 sqm
View : <https://www.wodongarealestate.com.au/sale/vic/north-eastern/baranduda/residential/house/5836436>



Clinton Harvey
0260 561 888



Measurements are approximate. Not to scale. For illustrative purposes only.