



2/1-2 Alison Court Wodonga VIC

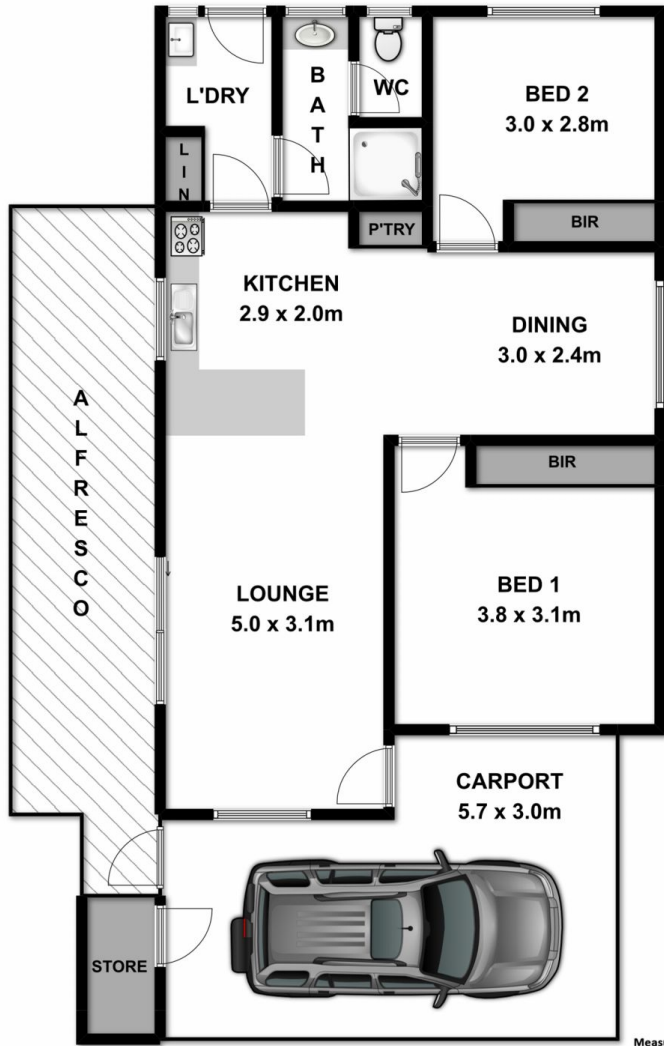
2 1 1

Whether you are entering the market or growing your portfolio this property will make a great addition.

Features include:

- * Two bedrooms with built in robes
- * L-shaped lounge/meals area with gas heating and wall air conditioning
- * Compact kitchen with gas cooking
- * Single carport
- * Lock up shed
- * Secure low maintenance yard with beautiful gardens
- * For Investors - Expected rental return of \$195-\$205 per week

Price : \$ 180,000
Land Size : 186 sqm
View : <https://www.wodongarealestate.com.au/sale/vic/north-eastern/wodonga/residential/unit/5836456>



Measurements are approximate. Not to scale. For illustrative purposes only.