



**13 Parkland Drive Wodonga VIC**

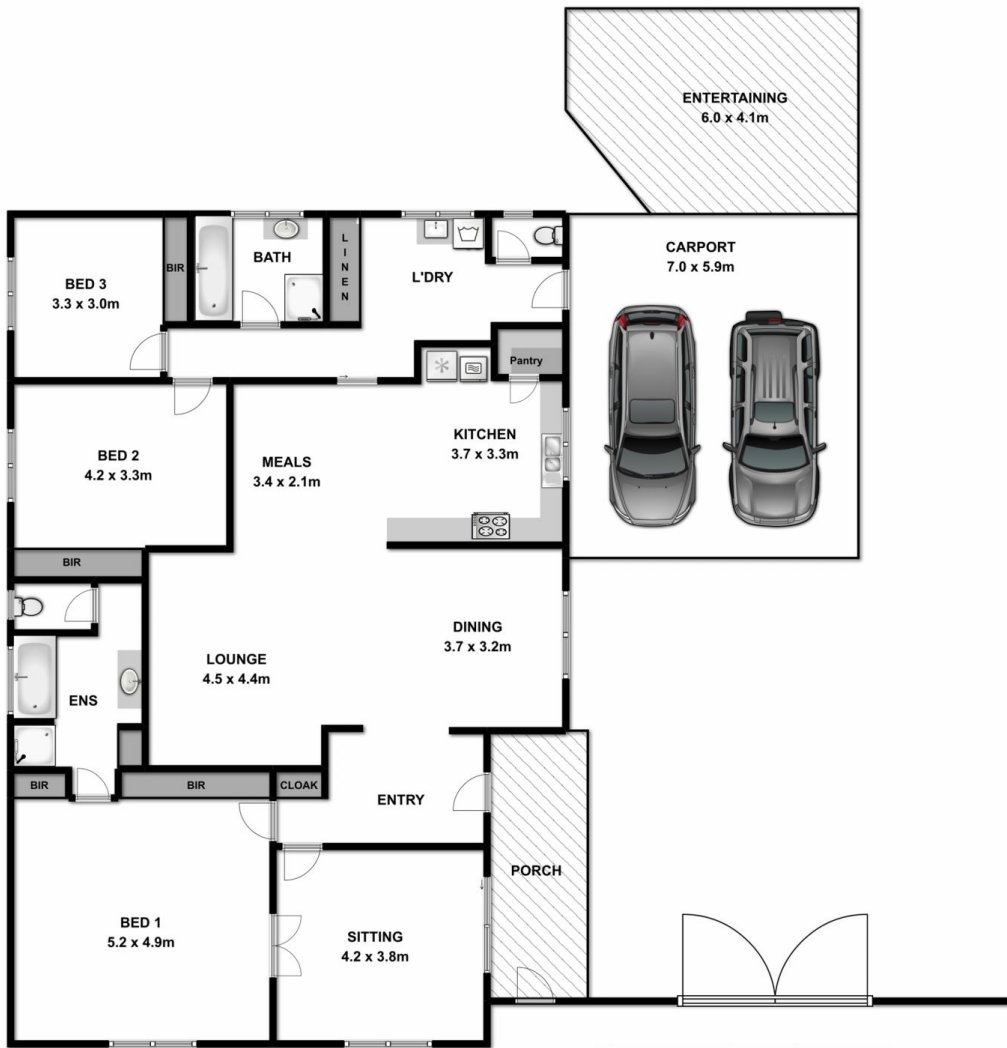
4 2 4

A stunning home in Wodonga's most popular area in Parkland Drive has easy access to every convenience. Tastefully renovated and finished with quality fixtures and fittings, this home offers style, size and lifestyle.

**Price** : \$ 343,000  
**Land Size** : 800 sqm  
**View** : <https://www.wodongarealestate.com.au/sale/vic/north-eastern/wodonga/residential/house/5836471>

Comprising of:

- \* Chef's kitchen with large dining area
- \* Huge main bedroom with beautiful en-suite plus built in robes
- \* Two more large bedrooms plus additional bedroom/office or nursery
- \* Tiled lounge/formal dining room
- \* Ducted heating and split system heating and cooling
- \* Four car accommodation and lock up shedding
- \* Superb outdoor entertaining area and courtyard
- \* 800m2 (approx) allotment



Measurements are approximate. Not to Scale. For illustrative purposes only.