



20 Memorial Drive Wodonga VIC

3 1 2

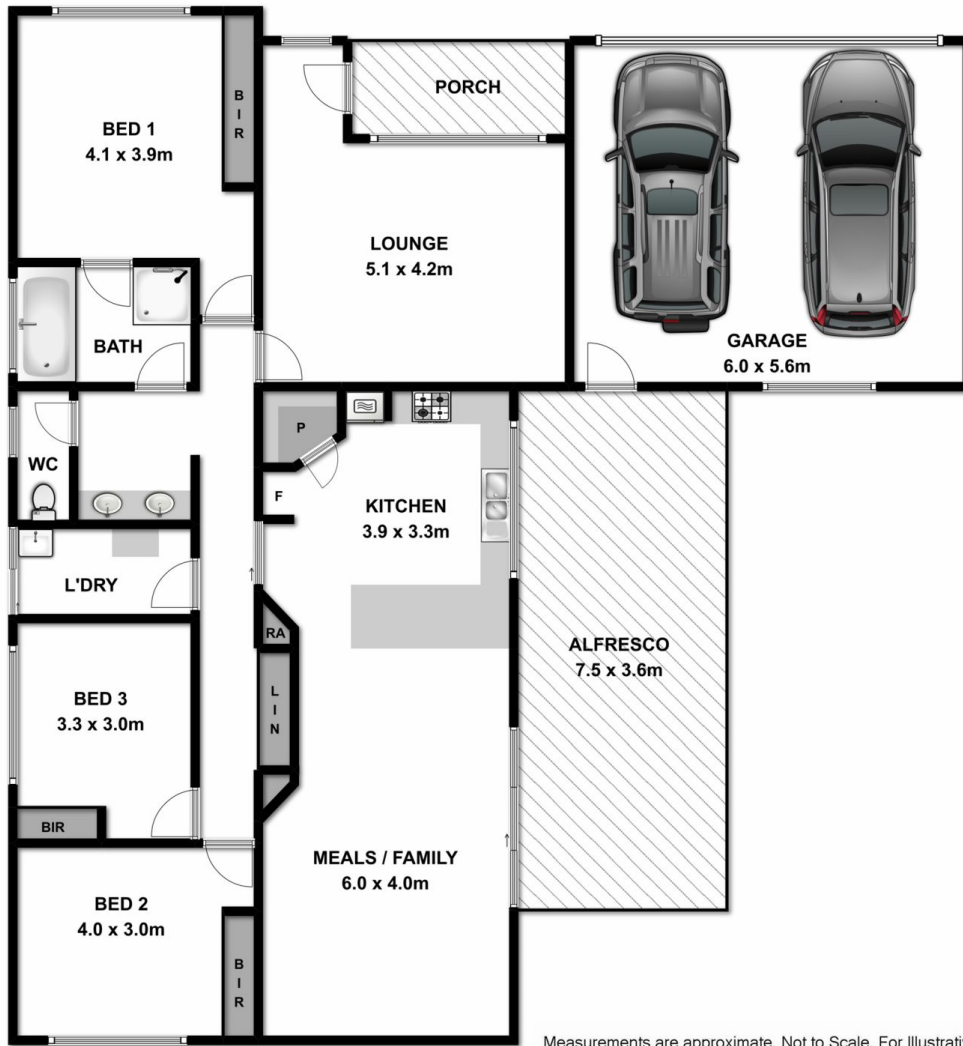
A generous size three bedroom home set amongst parklands and hills with a lovely outlook. Features include:

- * Fabulous kitchen with all the modern touches
- * Large lounge and separate tiled dining / family room
- * Ducted heating and cooling
- * Alfresco area overlooking a large allotment of 867m²
- * Back yard access is a big plus
- * Constructed in 2000 by local builder Graham James

Price : \$ 325,000
Land Size : 867 sqm
View : <https://www.wodongarealestate.com.au/sale/vic/north-eastern/wodonga/residential/house/5836472>



Margy Meehan
0260 561 888



Measurements are approximate. Not to Scale. For illustrative purposes only.