



2/29 Thomas Mitchell Drive Wodonga VIC

2 1 1

On offer is a well maintained quality built townhouse in a central location, within walking distance to the main shopping precinct of Wodonga.

Close to public transport, cafes, medical facilities and only minutes to the freeway link to Albury.

Featuring two generous sized bedrooms, both with built in robes and serviced by a central bathroom.

The light filled living area is open plan to the serviceable kitchen that offers gas cooking and plenty of cupboard space.

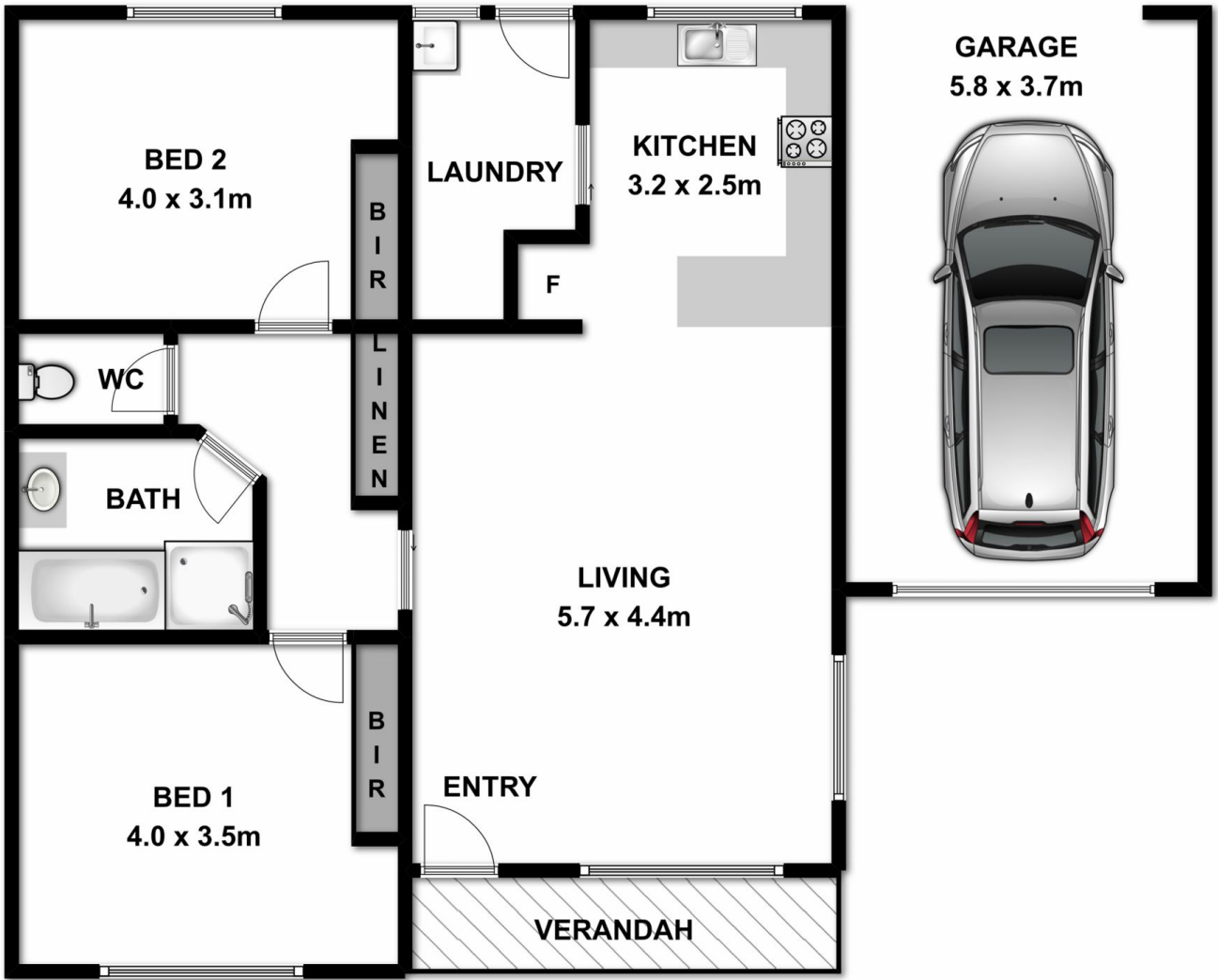
The outdoor paved courtyard is a good size, private and low maintenance, the ideal space for a small dog.

The rear yard can be accessed by the single lock up garage.

Currently tenanted at \$205 per week or can be purchased with vacant possession

Price : \$ 190,000

View : <https://www.wodongarealestate.com.au/sale/vic/north-eastern/wodonga/residential/unit/5836501>



Measurements are approximate. Not to scale. For illustrative purposes only.