



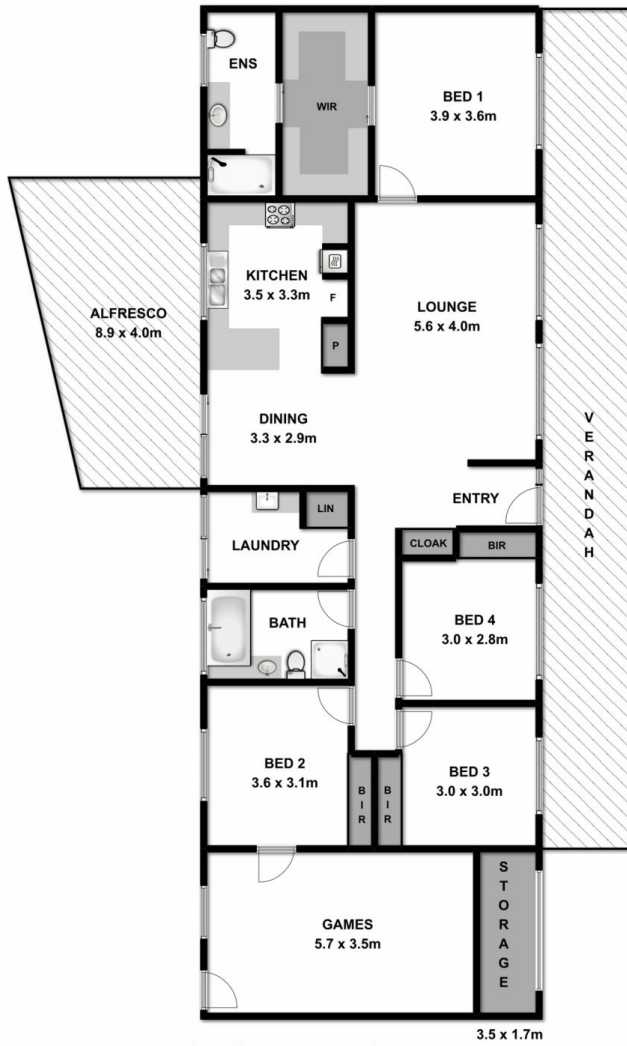
8 Delatite Court Wodonga VIC

4 2 1

Located close to LaTrobe/TAFE and sporting facilities, this spacious home offers a host of extras. The many features include-

- * Four bedroom, master with en-suite and huge walk in robe
- * Comforts of ducted cooling, gas wall furnace
- * Covered outdoor entertaining area
- * Single lock up garage, currently converted into teenagers retreat
- * Great secure low maintenance allotment with room for the caravan

Price : \$ 280,000
Land Size : 656 sqm
View : <https://www.wodongarealestate.com.au/sale/vic/north-eastern/wodonga/residential/house/5836507>



Measurements are approximate. Not to scale. For illustrative purposes only