



20 Saunders Crescent Wodonga VIC

4 2 2

A generous size four bedroom home set amongst parkland and hills, walking/riding tracks and incorporating a peaceful lifestyle in a quality estate. The many features include:

- * Fabulous two pak kitchen with all the modern touches
- * Large lounge and separate tiled family room
- * Ducted gas heating and evaporative cooling
- * Pergola area overlooking a large allotment approx 767m²
- * Double garage with remote and internal access
- * Important side access for a caravan, boat, trailer etc
- * For investors expected rental return of \$370-380 per week
- * Perfectly positioned for the continual growth of Wodonga

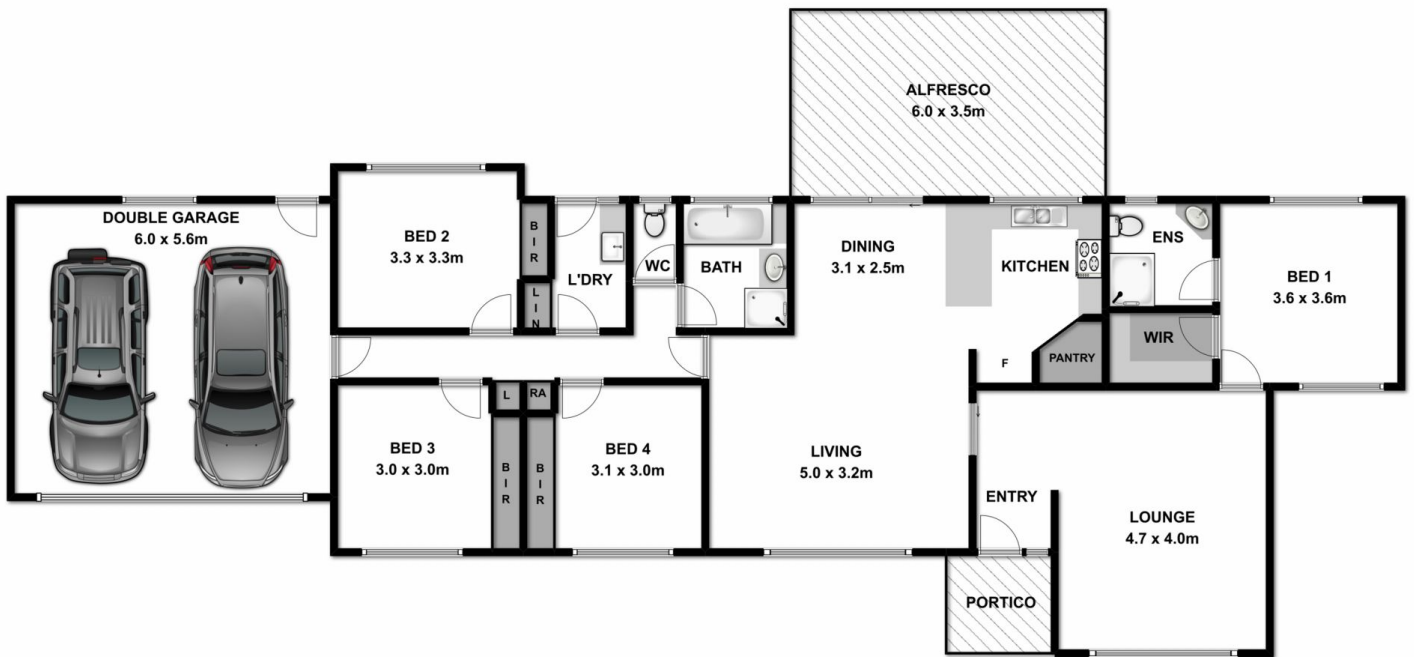
Price : \$ 325,000
Land Size : 767 sqm
View : <https://www.wodongarealestate.com.au/sale/vic/north-eastern/wodonga/residential/house/5836508>



Margy Meehan
0260 561 888



Clinton Harvey
0260 561 888



Measurements are approximate. Not to scale. For illustrative purposes only.