



1 & 2/132 Benyon Street Albury NSW

4 2 2

It's a rare find for these 2 free standing impressive townhouses on the one block in much sought after Eastern View Estate.

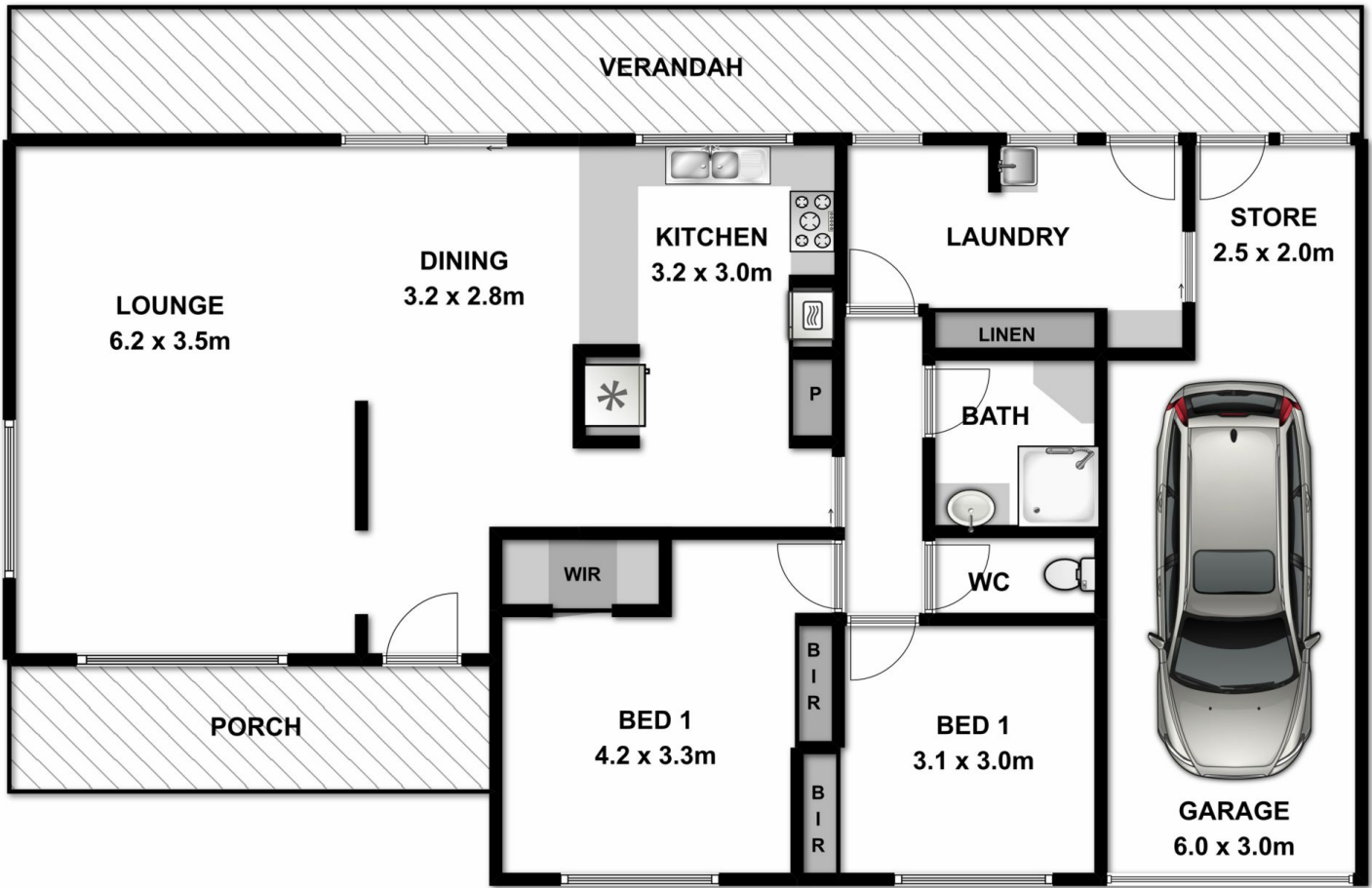
Albury base hospital, IGA supermarket, Cafe, Parks and Bus Stops are all within walking distance.

Both townhouses features include:

- * Two bedrooms with built in robes
- * 1 bathroom
- * Gas hot plates and electric oven
- * Gas heating and wall air conditioner
- * Secure and private yard
- * Single lock up garage with remote and internal access
- * Additional car spaces within the complex
- * Low maintenance gardens with automatic irrigation system

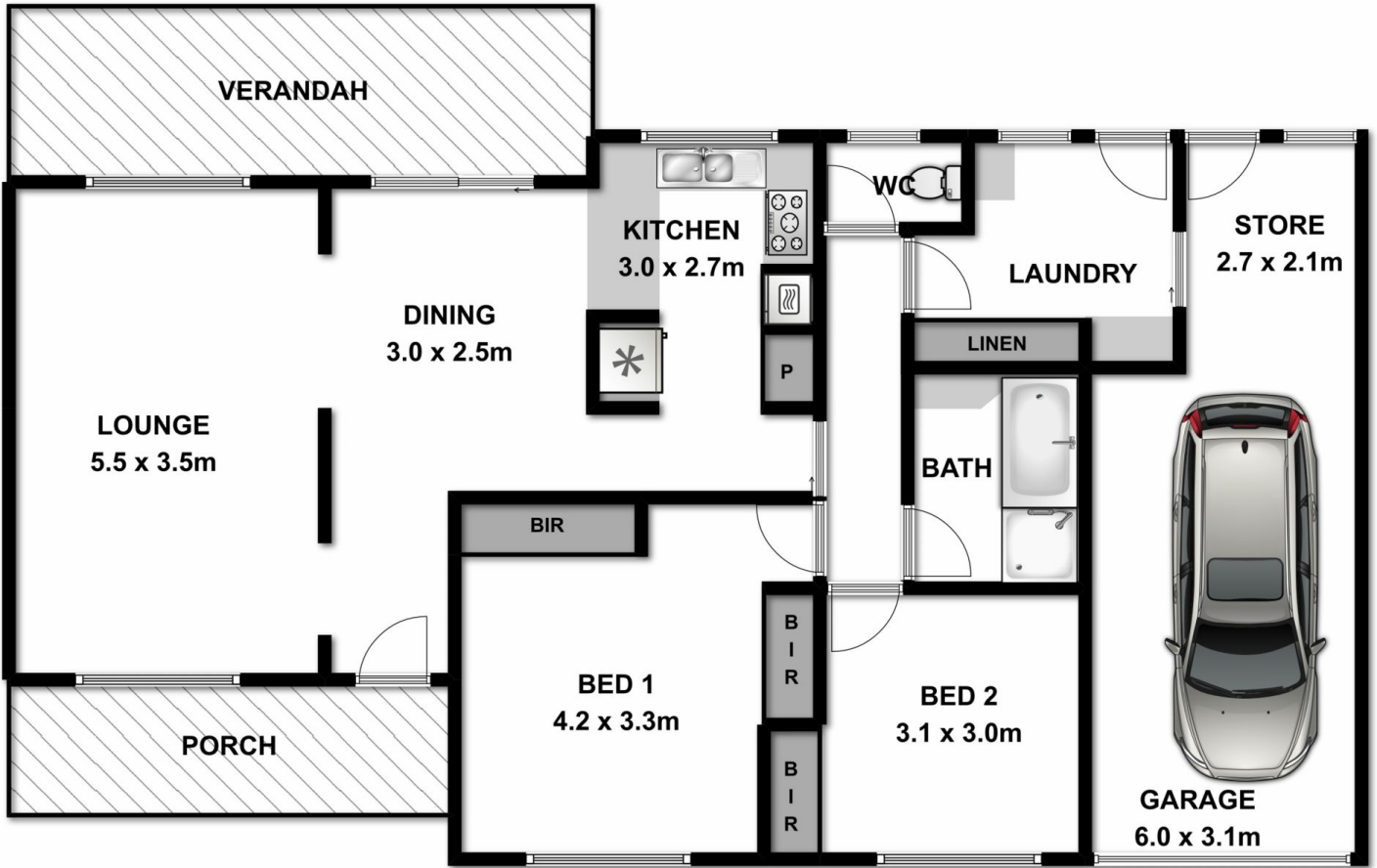
Land Size : 865 sqm
View : <https://www.wodongarealestate.com.au/sale/nsw/murray-region/albury/residential/block-of-units/5836515>

UNIT 1



Measurements are approximate. Not to scale. For illustrative purposes only.

UNIT 2



Measurements are approximate. Not to scale. For illustrative purposes only.