



29 Albert Road Chiltern VIC

4 2 6

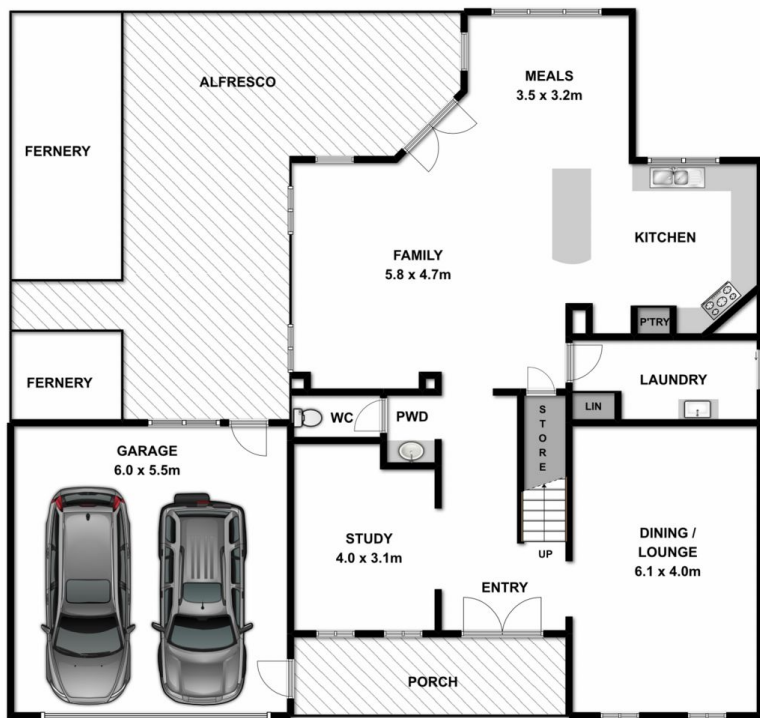
Gracious modern double storey home on 1650m² block in township with a huge shed to satisfy all the family.

Entry through the double doors to a tiled hallway with a large lounge to the right and a study/library to the left then on to the massive open plan kitchen/meals/family room that ultimately leads to the outdoor living area.

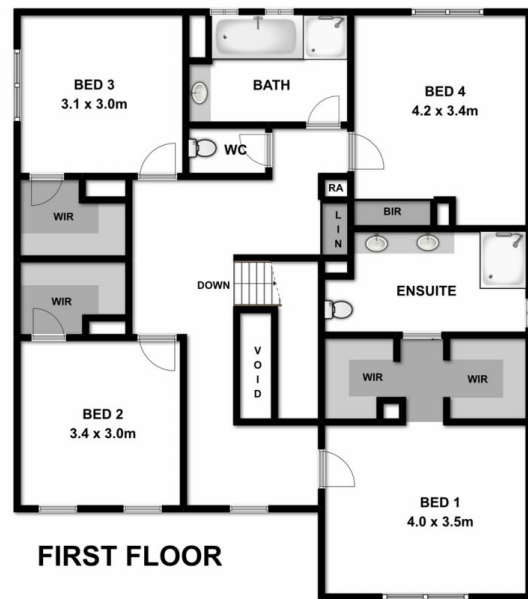
A feature of the kitchen is the 900mm Westinghouse electric oven with gas cook top, Miele dishwasher, plus a pantry, stone bench tops, double sink and plenty of cupboards to go with it.

To complete the ground floor is an exceptional laundry plus a powder room. Great storage spaces exist for ironing board, suitcases and other items that are required from time to time.

Price : \$ 382,000
Land Size : 1650 sqm
View : <https://www.wodongarealestate.com.au/sale/vic/north-eastern/chiltern/residential/house/5836518>



GROUND FLOOR



FIRST FLOOR

Measurements are approximate. Not to scale. For illustrative purposes only.