



**61 Johnston Road Albury NSW**

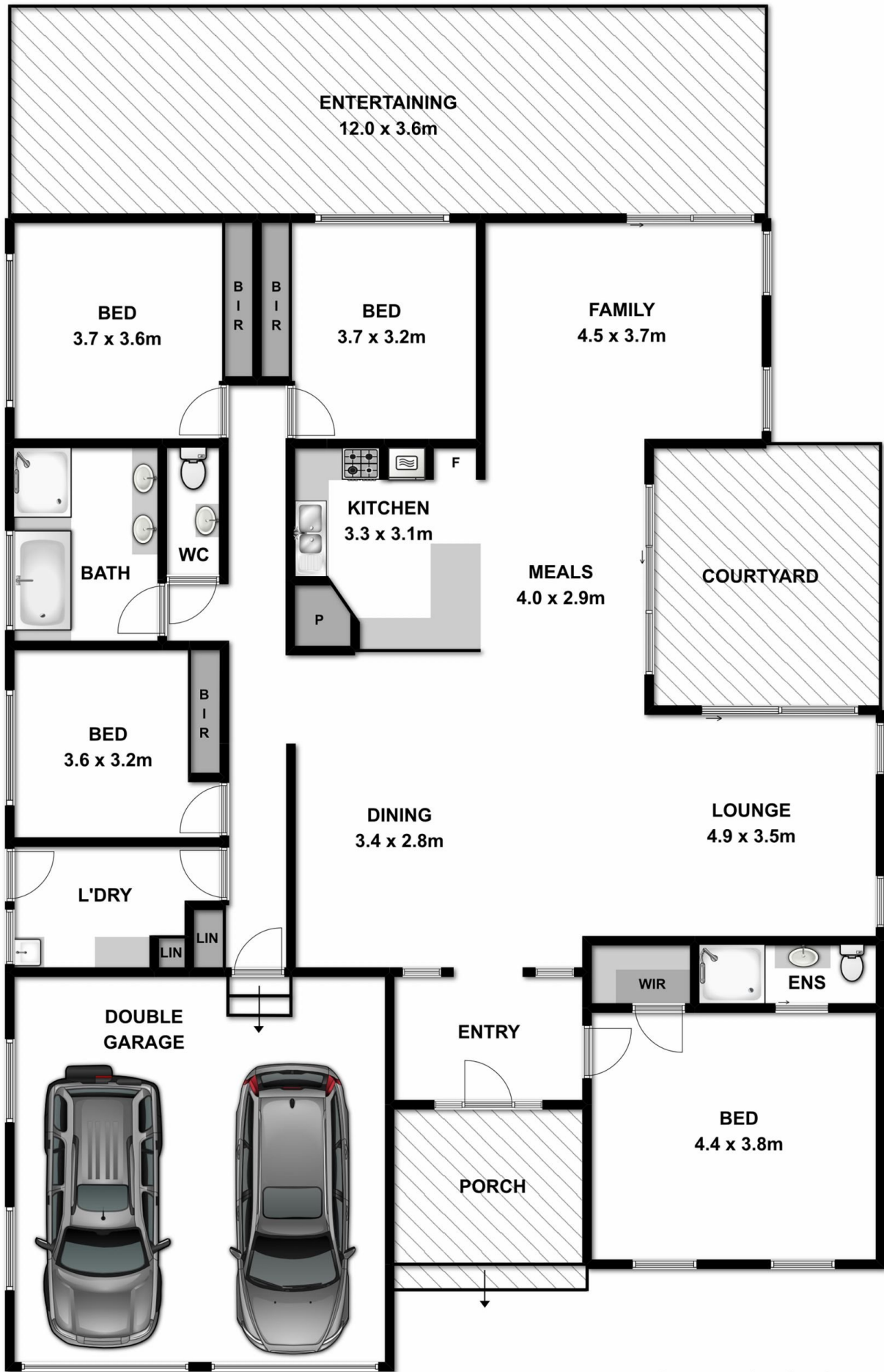
4 2 2

This impressive and stylish family home in sort after Pemberton Park provides size, quality and easy living. Close to Albury Wodonga Private Hospital, medical clinics, parks, bus stops and schools

**Price** : \$ 390,000  
**Land Size** : 880 sqm  
**View** : <https://www.wodongarealestate.com.au/sale/nsw/murray-region/albury/residential/house/5836522>

Offering:

- \* Four generous sized bedrooms, with built in robes
- \* Master with walk in robe and en-suite
- \* Large entry leading onto formal dining and formal lounge
- \* Beautiful timber kitchen with heaps of cupboard space
- \* Family room overlooking all weather paved entertaining area
- \* Main bathroom with double vanity, also separate toilet & basin
- \* Beautifully landscaped low maintenance gardens
- \* Backing onto parkland
- \* Just move in and relax, all the hard work is done!



Measurements are approximate. Not to scale. For illustrative purposes only.