



13 Craig Drive Bellbridge VIC

3 2 2

With views to Lake Hume through the shrubs and trees that also provide privacy you will think that you're on holidays all year round.

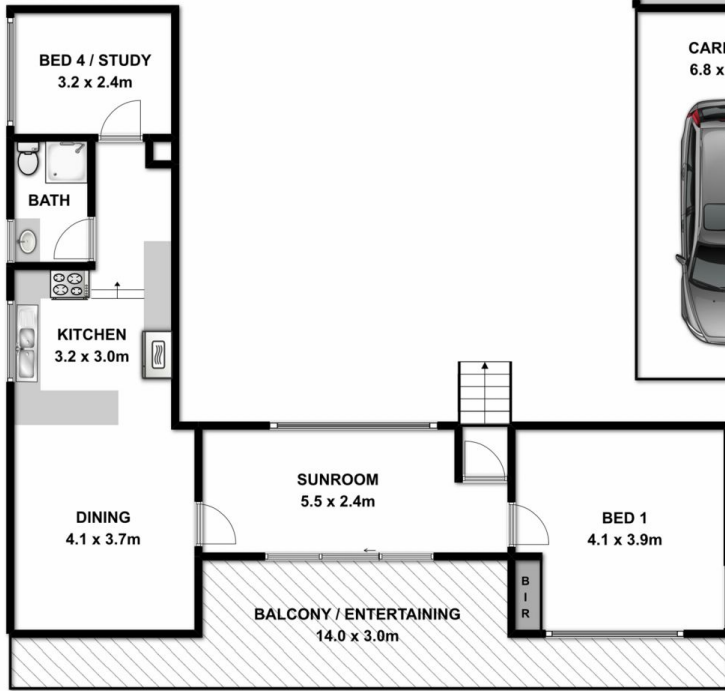
Just 10-15 minutes from Albury & Wodonga with the airport even closer what away to escape the rigors of daily work to your own Shangri La!

Upstairs features a main bedroom, study, bathroom, kitchen, lounge plus the deck on which to while away your leisure time.

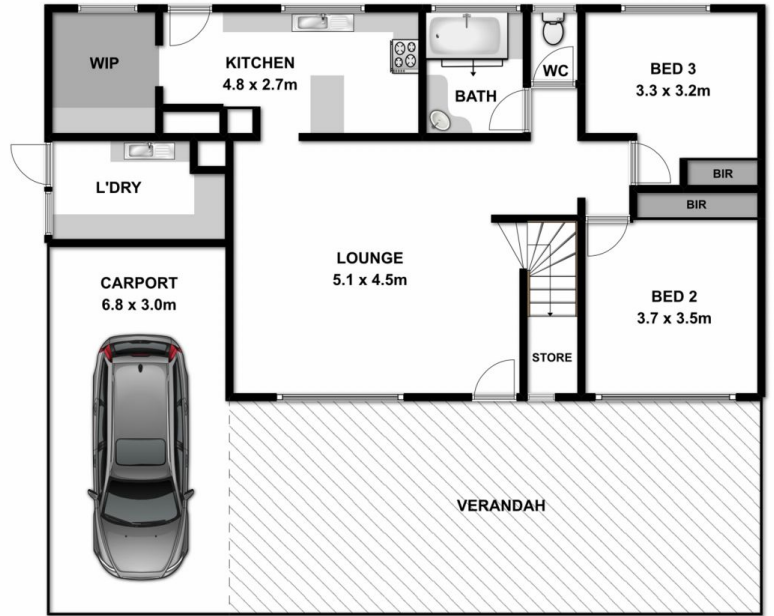
Downstairs we offer two bedrooms, living room, kitchenette with huge walk-in pantry, bathroom and laundry.

With an internal staircase for 1st floor access this home is suited to extended family living or a perfect holiday home

Price : \$ 250,000
Land Size : 949 sqm
View : <https://www.wodongarealestate.com.au/sale/vic/north-eastern/bellbridge/residential/house/5836524>



UPPER LEVEL



GROUND LEVEL

Measurements are approximate. Not to scale. For illustrative purposes only.