

**10 Wiltshire Crescent Wodonga VIC**

3 1 1

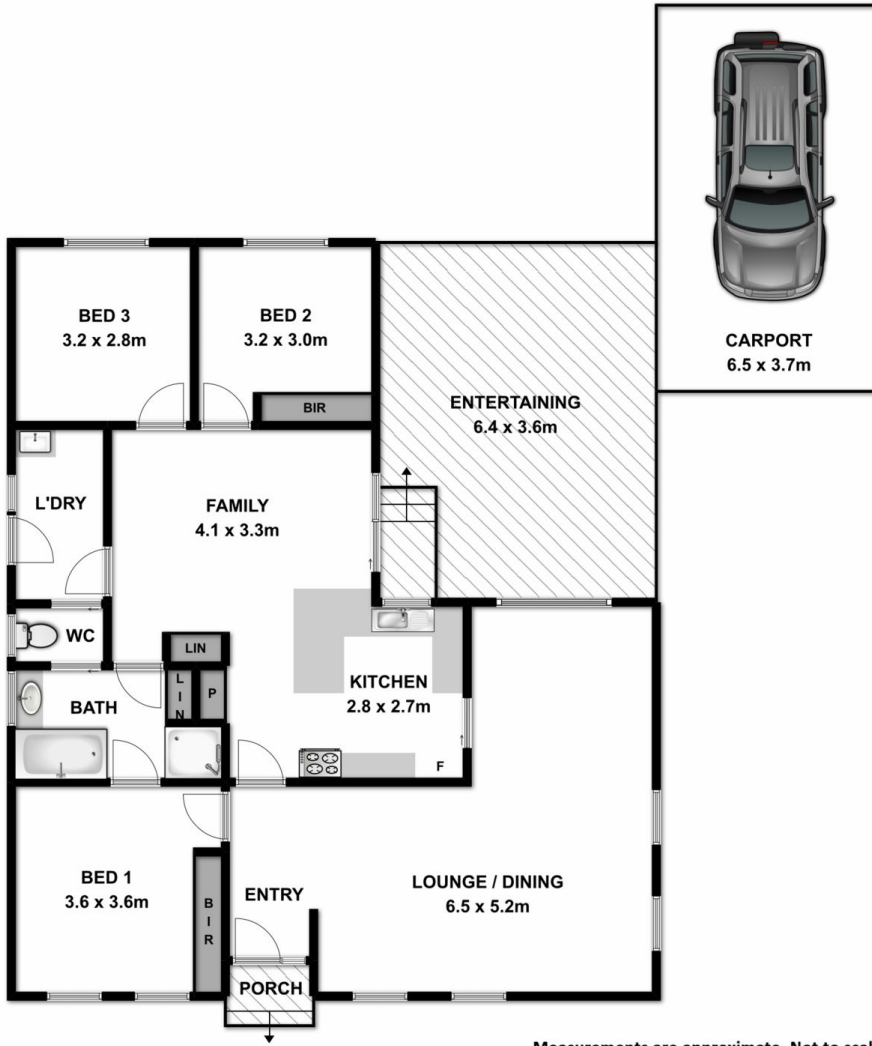
Well presented and affordable home so close to all conveniences with the bonus of ducted heating and cooling throughout. The features include-

- \* Spacious lounge/dining with updated carpet and blinds
- \* Main bedroom with semi en-suite/dual access bathroom
- \* Galley style gas kitchen with dishwasher
- \* Large paved outdoor entertaining area ideally placed off kitchen and family room
- \* Tidy allotment of 625m<sup>2</sup> with carport, storage and garden shed
- \* Currently let to excellent tenant at \$260 per week or can be purchased with vacant possession

**Price** : \$ 221,000  
**Land Size** : 625 sqm  
**View** : <https://www.wodongarealestate.com.au/sale/vic/north-eastern/wodonga/residential/house/5836547>



**Clinton Harvey**  
0260 561 888



Measurements are approximate. Not to scale. For illustrative purposes only.