



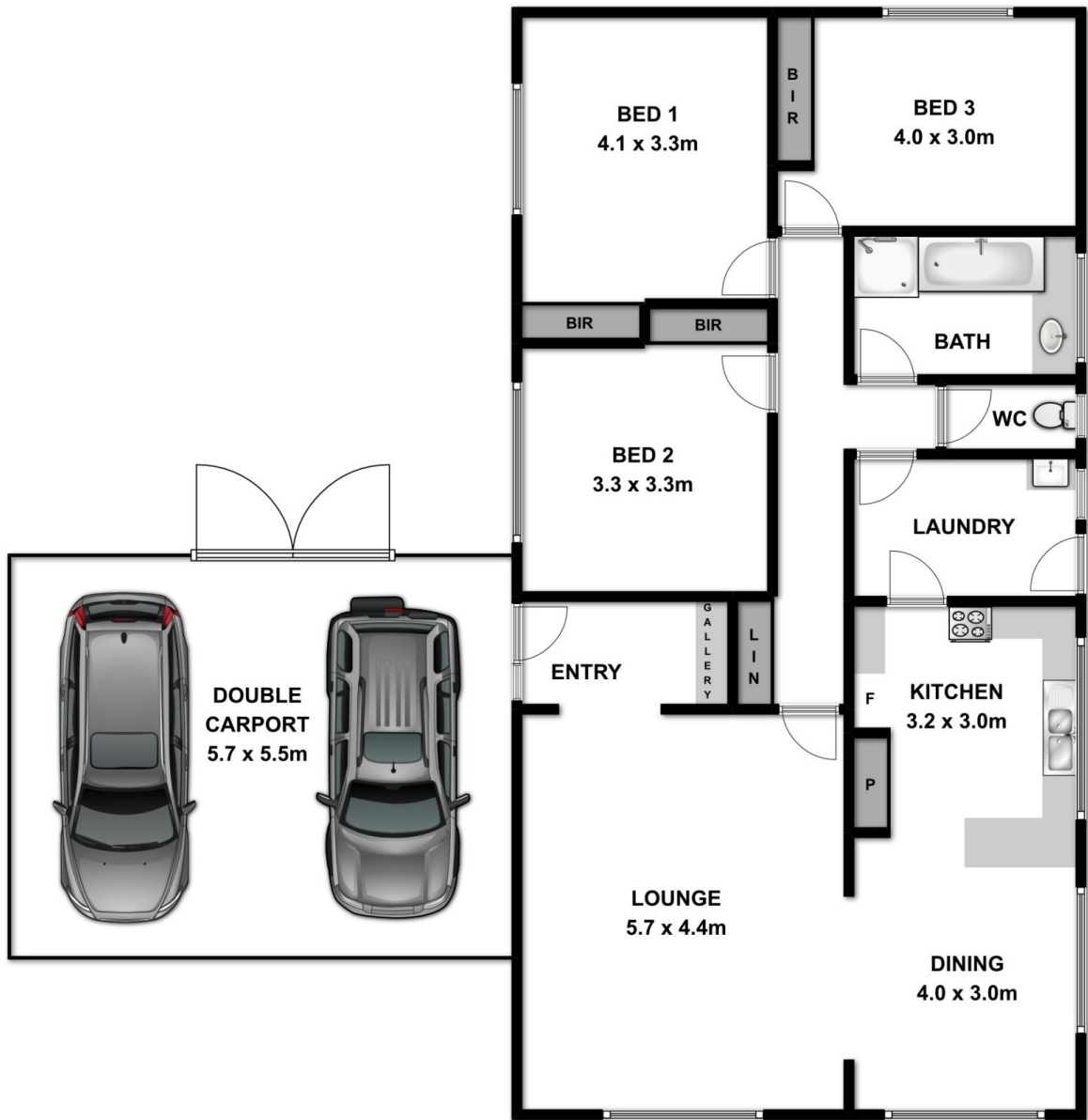
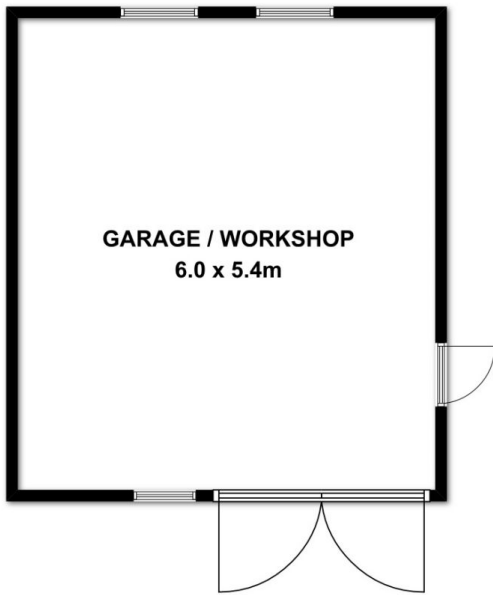
8 Edinburgh Circuit Wodonga VIC

3 1 2

Great home with three large bedrooms located close to TAFE and La Trobe.
Featuring:

- * Huge North facing lounge room
- * Separate dining and functional kitchen.
- * Outside offers a secure 835m2 allotment, double carport and large workshop.
- * For Investors - currently leased until Dec 2015 at \$295 per week.

Price : \$ 259,900
Land Size : 835 sqm
View : <https://www.wodongarealestate.com.au/sale/vic/north-eastern/wodonga/residential/house/5836570>



Measurements are approximate. Not to scale. For illustrative purposes only.