



**2/12 Chifley Street Wodonga VIC**

2 1 2

This exceptional location offers proof with the original owner residing here since new in 1987. Recently professionally painted throughout the home is crisp and fresh. The many features include-

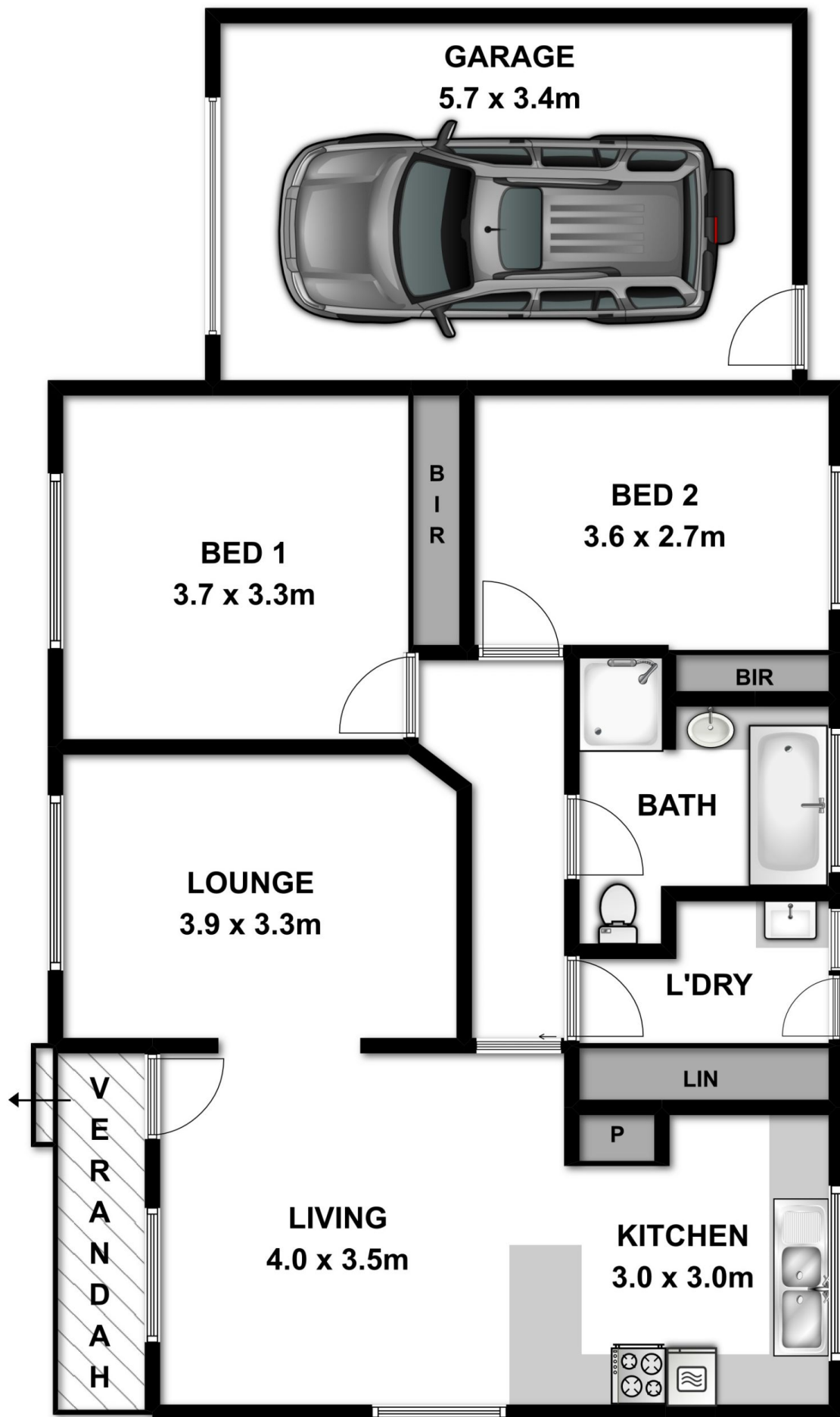
- \* Gas kitchen with dishwasher and pantry
- \* Two double bedrooms with built in robes
- \* Comforts of gas heating and wall refrigerated cooling
- \* Established gardens including large rear yard with paved entertaining area and sail shade
- \* For investors expected rental return of \$220 per week
- \* Handy location within short proximity to shops, schools and transport

**Price** : \$ 210,000

**View** : <https://www.wodongarealestate.com.au/sale/vic/north-eastern/wodonga/residential/unit/5836586>



**Clinton Harvey**  
0260 561 888



Measurements are approximate. Not to scale. For illustrative purposes only.