



43 Memorial Drive Wodonga VIC

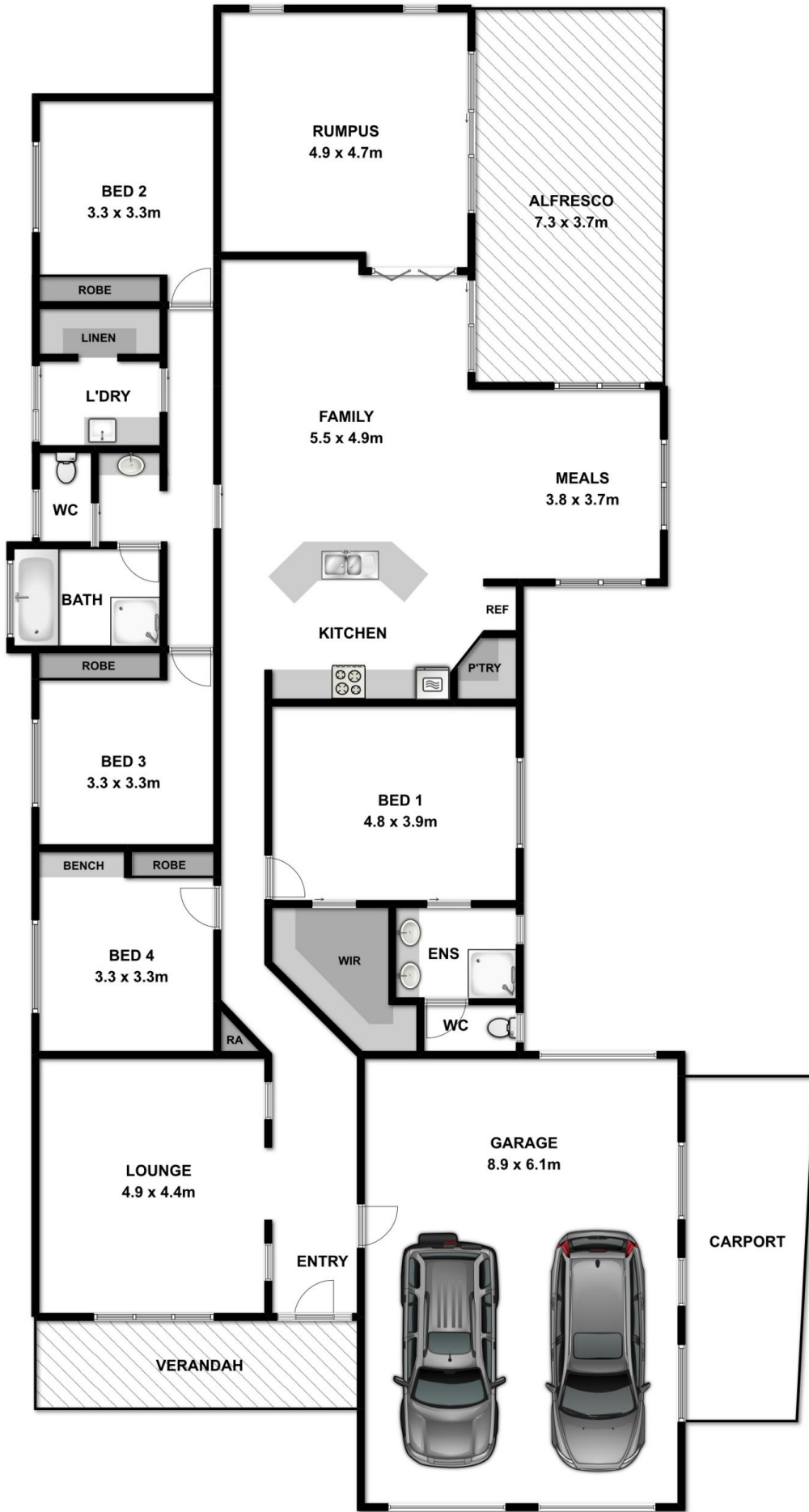
4 2 3

Overlooking the picturesque House Creek and horses grazing in the foreground, the sense of nature and serenity here is unmatched. The vast 1271m² green level yard gives you the ultimate feeling of space, is the ideal environment for the growing family and offers potential to add your own personal needs. Perfectly placed in the growth corridor of Wodonga, the home has easy access to schools and shops, beautiful walking/bike tracks, surrounded by quality homes and located in a quiet, family friendly neighbourhood.

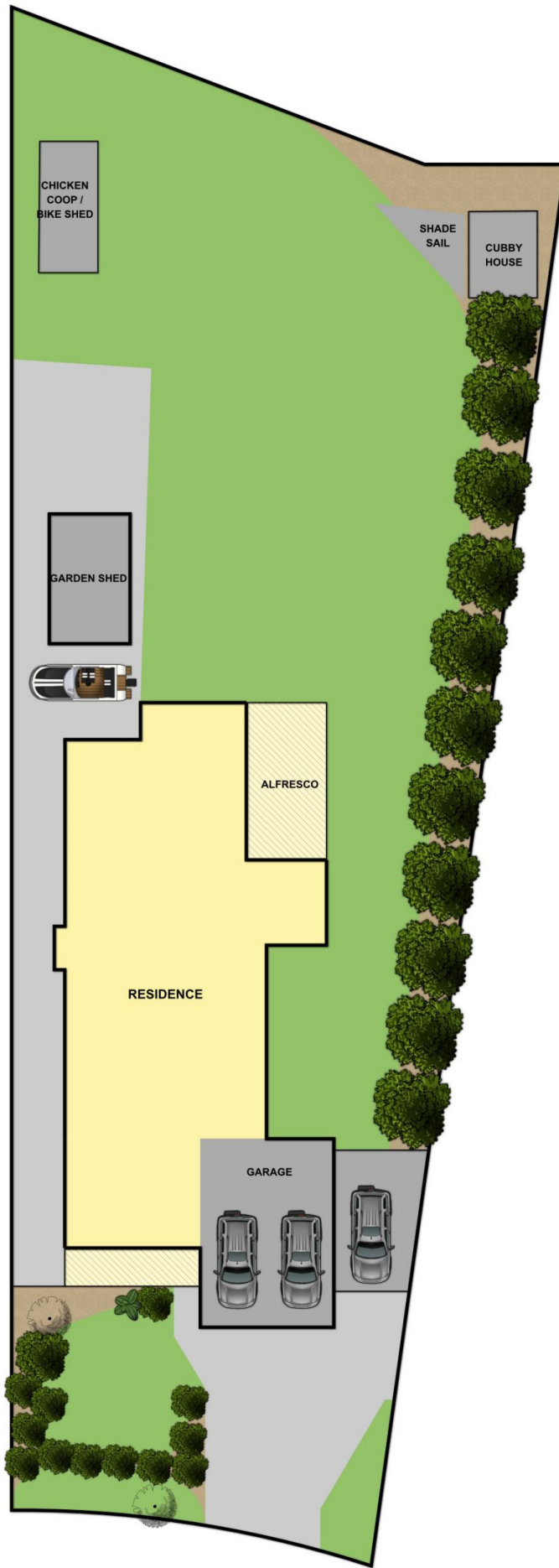
Some of the many premium features include-

- * Immaculately presented 25 square home superbly built by Alatalo Bros in July 2007
- * Three spacious living areas of formal lounge, tiled family room and rumpus/theatre room with phone point
- * Well appointed 2 pack satin kitchen with 900mm gas hot

Building Size : 233.1 sqm
Land Size : 1271 sqm
View : <https://www.wodongarealestate.com.au/sale/vic/north-eastern/wodonga/residential/house/5836669>



Measurements are approximate. Not to scale. For illustrative purposes only.



Measurements are approximate. Not to scale. For illustrative purposes only.