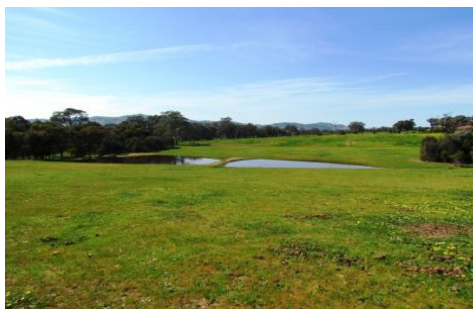




**wodonga real estate
bestagents**



29/310 Whytes Road Baranduda VIC

Fantastic opportunity to build your dream home on the last vacant block available in Valley Views.

Fully fenced and zoned residential with subdivision potential (STCA)

Two spring fed dams
Established tree lots with gently sloping grazing land

5.35 hectares (approx thirteen and a half acres) with town water, natural gas, telstra and power

Enjoy country living within city limits close to Wodonga and Albury

Terms: 10% deposit - Balance 45 days

Price : \$ 360,000
Land Size : 5.35 ha
View : <https://www.wodongarealestate.com.au/sale/vic/north-eastern/baranduda/residential/land/5836672>



Margy Meehan
0260 561 888