



**wodonga real estate
bestagents**



3 Abbott Drive Lavington NSW

4 2 3

This outstanding property with 30 squares of living offers the very best of lifestyle living with a relaxed country feel, yet only a few minutes drive to the centre of Lavington.

On a 4,000m² block you'll feel you are miles away.

The property will impress from first sight with a feeling of space and quality features and fixtures throughout.

The gorgeous Jarrah timber floor is impressive and the master retreat features an over sized bedroom, study, walk in robe and en-suite with spa.

The large open plan kitchen featuring quality stainless steel appliances and 900mm cooktop, dining and living area is perfect for the entertainer and a gas log fire is an outstanding feature.

The separate theatre room is ideal for smaller gatherings.

With Hydronic floor heating and ducted cooling, all year comfort is assured. For lovers of the outdoors, the enclosed entertainment area that opens to an 11 metre salt

Land Size : 4002 sqm

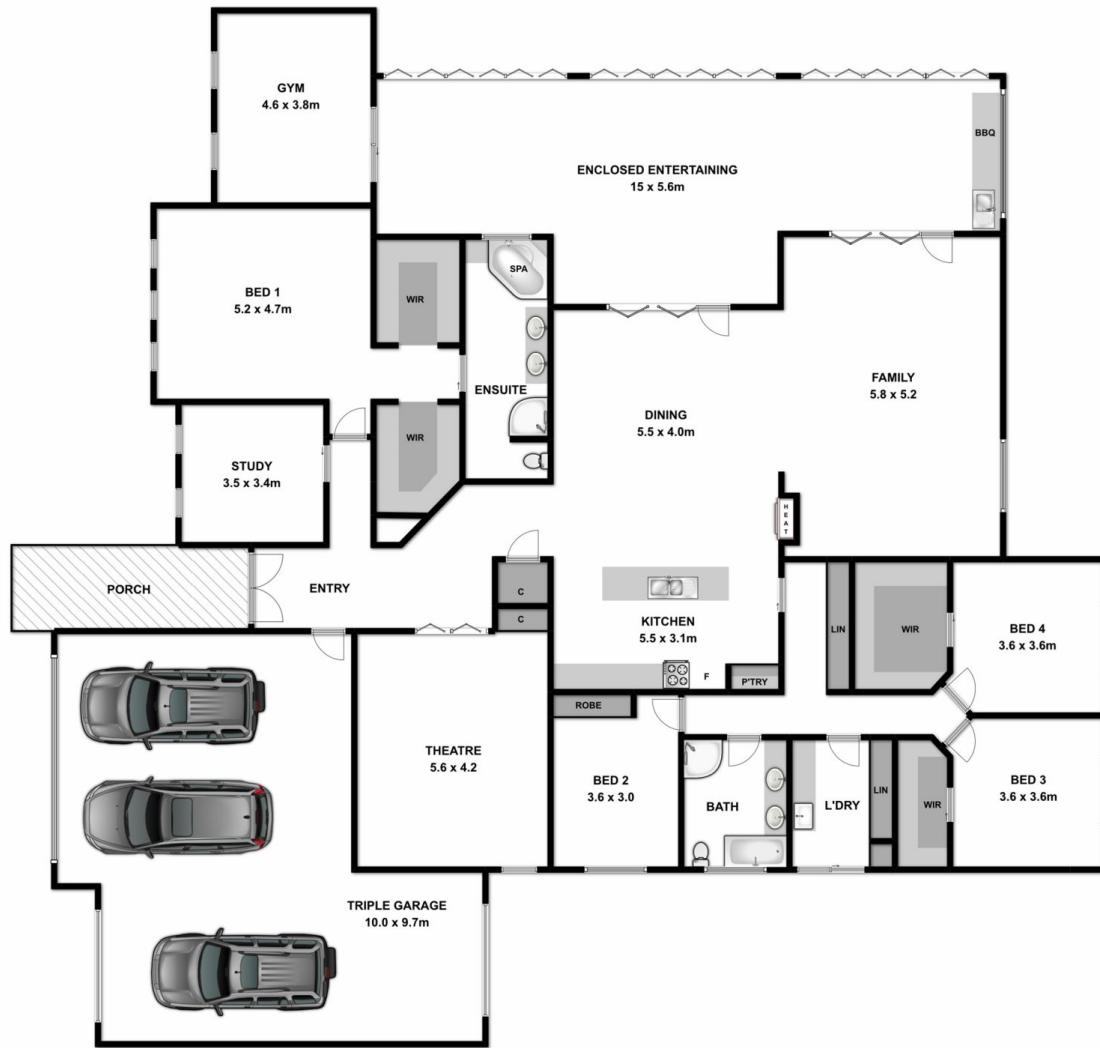
View : <https://www.wodongarealestate.com.au/sale/nsw/murray-region/lavington/residential/house/5836673>



Mark Rosevear
0260 561 888



Clinton Harvey
0260 561 888



Measurements are approximate. Not to scale. For illustrative purposes only.