



11 Nordsvan Drive Wodonga VIC

4 2 2

Set on an elevated allotment of approximately 1092m² in the beautiful established Willow Rise, this classic family home offers plenty of features and extras.

Comprising of four spacious bedrooms with ensuite to master, plus study and large lounge capturing the views across Albury/Wodonga.

Large functional timber kitchen with Caesar Stone benchtops, huge laundry leading out to covered alcove area.

The secure rear yard has plenty of room for a pool and kids to play while the large alfresco area is great for entertaining.

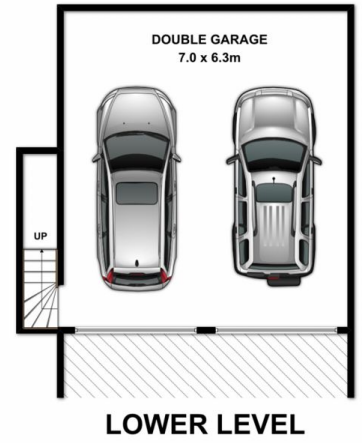
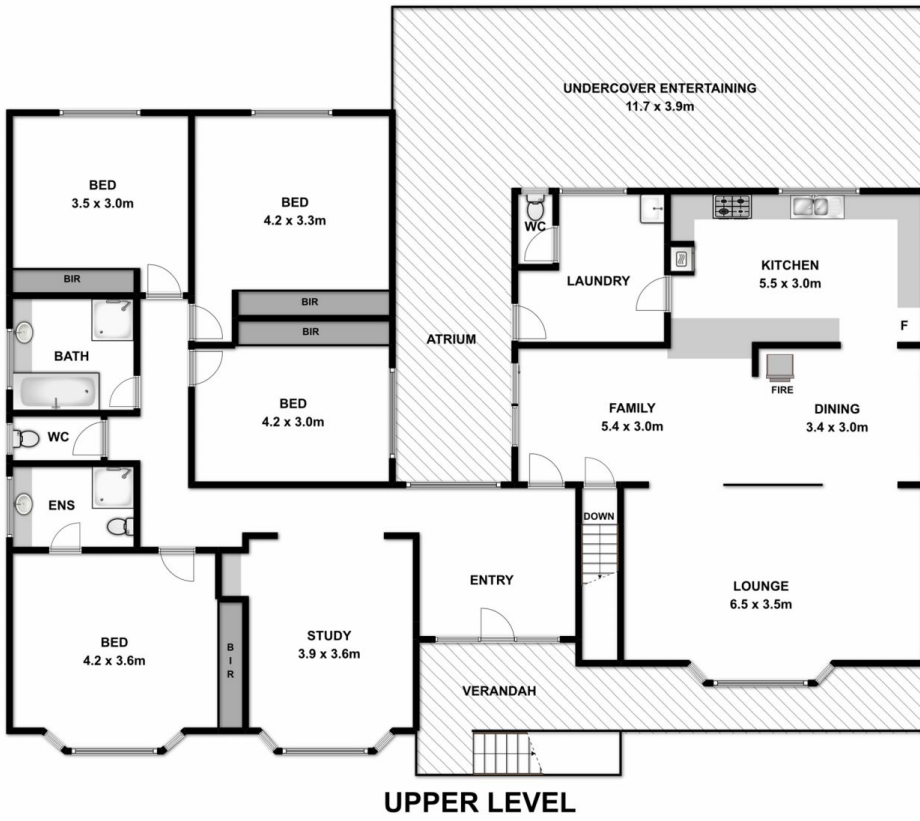
Ample vehicle accommodation is provided for with oversized double lock up garage/workshop plus an additional shed/workshop.

So many additional extras including water tanks, solar panels and watering system.

Price : \$ 389,000

Land Size : 1092 sqm

View : <https://www.wodongarealestate.com.au/sale/vic/north-eastern/wodonga/residential/house/5836696>



Measurements are approximate. Not to scale. For illustrative purposes only.