



1420 Kiewa Valley Highway Kiewa VIC

3 1 2

Do you want to escape? Leave the city behind?

This little piece of rural life is up for the taking. Just a 15 minute drive from Wodonga heading towards the hills, this country inspired retreat could be what you are looking for!!

Featuring three bedrooms, master with walk in robe.

The renovated timber country kitchen is modern and features stainless steel appliances and ample storage.

The Federation style family bathroom features a stylish claw foot bath and modern shower recess.

Set on a 1000m² plus block with a double colorbond garage and undercover patio.

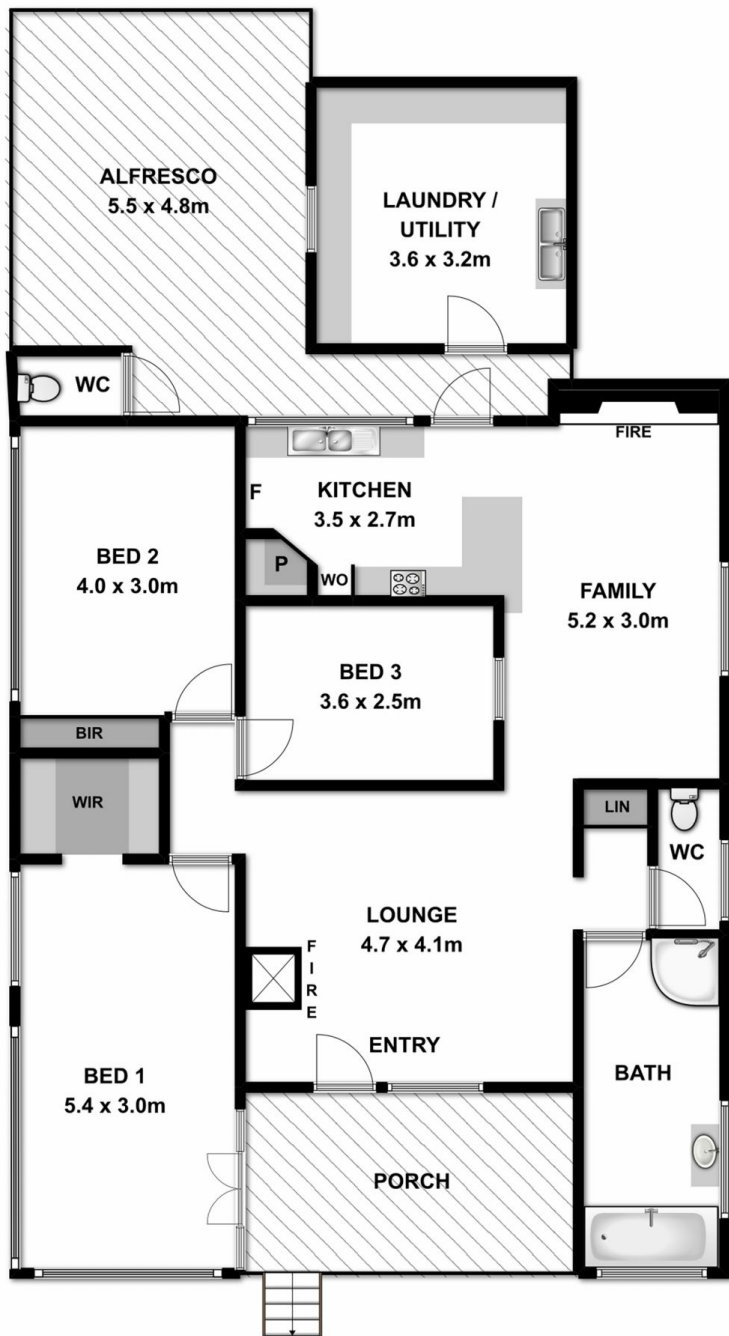
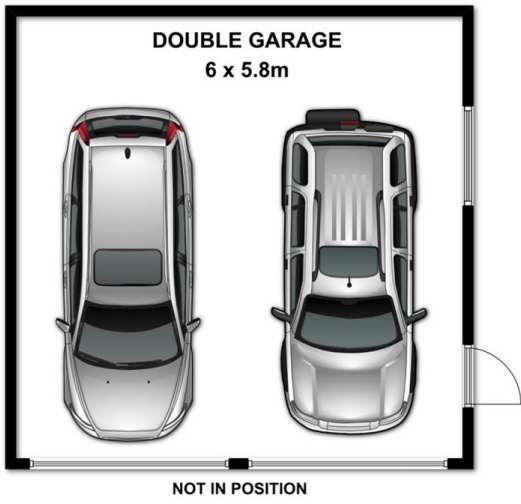
Currently tenanted or can be purchased with vacant possession.

At such an affordable price, don't delay.

Price : \$ 225,000

Land Size : 1036 sqm

View : <https://www.wodongarealestate.com.au/sale/vic/north-eastern/kiewa/residential/house/5836710>



Measurements are approximate. Not to scale. For illustrative purposes only.