



4/16 Keatinge Court Lavington NSW

2 1 3

This delightful home unit is tucked away in its own little corner.

Surrounded by quality homes it is close to shopping, two schools, hotel and the freeway etc. allowing easy access to Wodonga

Lock up garage plus two car spaces, L-shaped rear yard that is ideal for an outdoor living area and still have room for a dog.

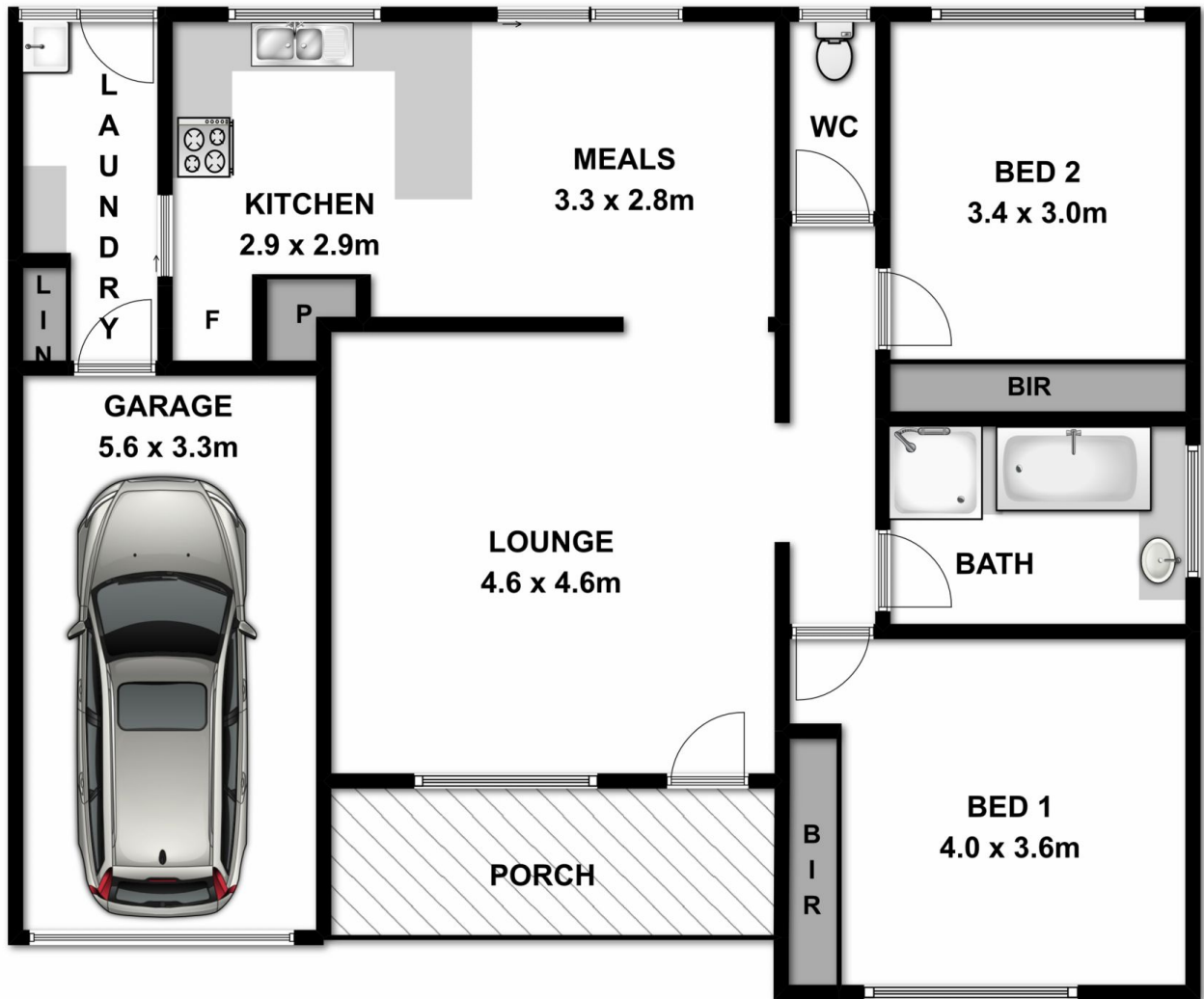
Good quality living yet so very private.

This unit has value written all over it.

Investors should consider carefully!

Price : \$ 213,500

View : <https://www.wodongarealestate.com.au/sale/nsw/murray-region/lavington/residential/townhouse/5836711>



Measurements are approximate. Not to scale. For illustrative purposes only.