



280 Ennis Road Wodonga VIC

4 1 6

Surrounded by farmland with complete privacy assured, this beautifully presented home within 10 minutes to High Street Wodonga offers the most breathtaking views.

Retreat to the fabulous rear deck entertaining area and truly lose yourself from the frantic pace of the modern world. Quality built by the original owners through CNC homes, there is nothing to do but to move in and enjoy. The many premium features include-

Updated electric kitchen with Bosch dishwasher
Two generous size living areas of lounge with bay window and tiled family room
Large semi en-suite/two way bathroom, separate second toilet

Comforts of ducted evaporative cooling and 2015 wood combustion heater

Shedding comprises four vehicle lock up garage/workshop, caravan shed, container, wood shed and garden shed

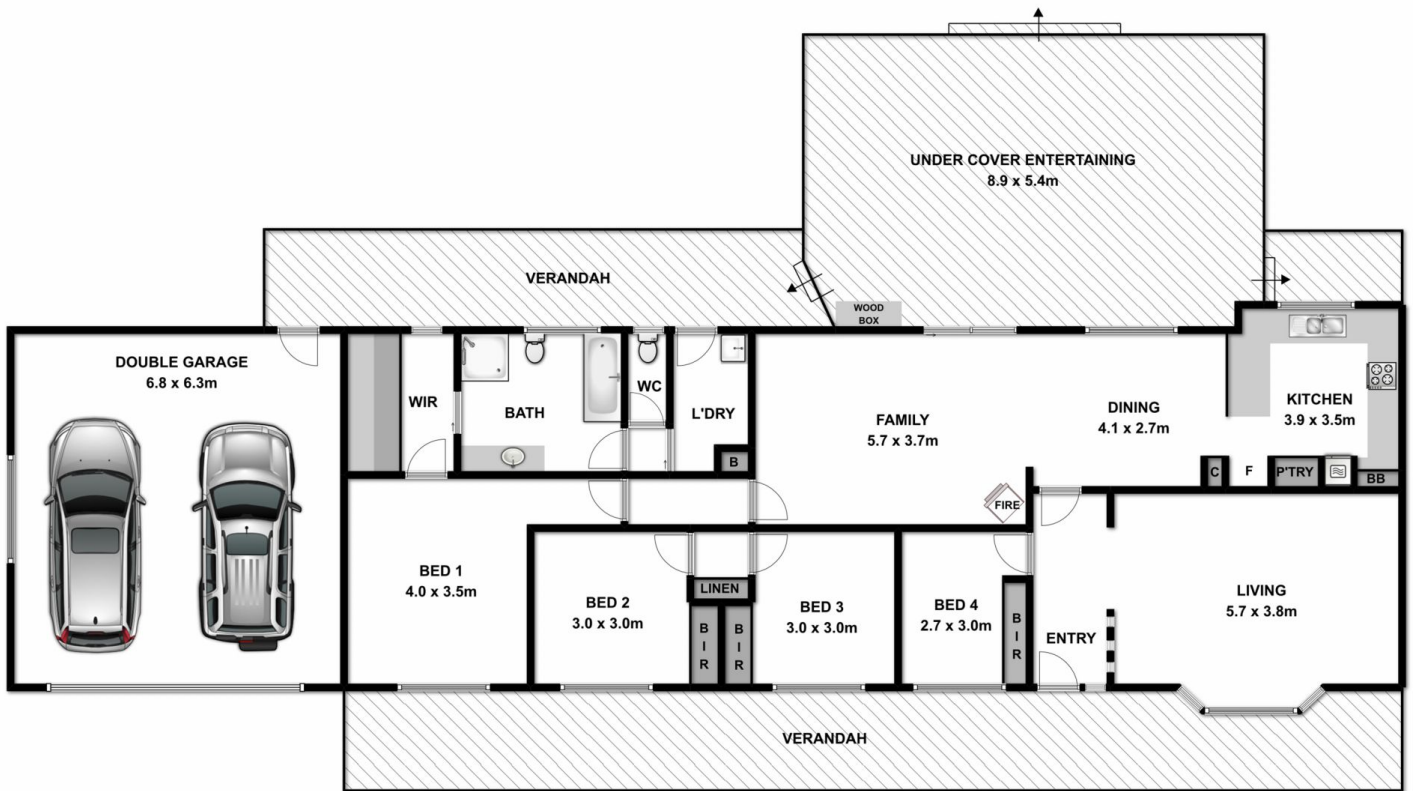
Price : \$ 540,000

Land Size : 5 Acres

View : <https://www.wodongarealestate.com.au/sale/vic/north-eastern/wodonga/residential/house/5836731>



Clinton Harvey
0260 561 888



Measurements are approximate. Not to scale. For illustrative purposes only.