

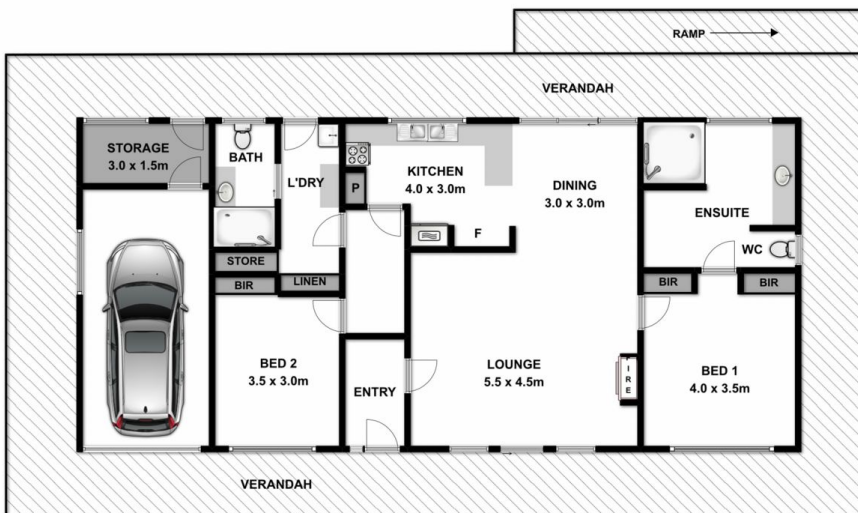
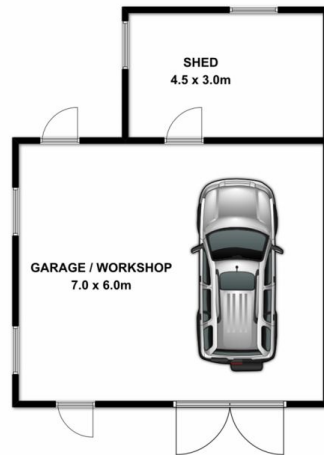


2-4 Victoria Street Chiltern VIC

2 2 3

One owner, craftsman built home on combined 3,500m² block on edge of township. About 33 years old the home has been meticulously maintained over that time and recently refreshed with paint and new carpets to reflect today's trends & tastes. Outstanding open plan lounge dining area, with solid fuel heating to warm you up in the winter months, as well as ducted air conditioning. The modern kitchen complete with electric oven, gas cook top & pantry. Master suite offers built in robes, a huge en-suite bathroom that is wheel chair friendly and also has room for a spa bath. The second bedroom was designed for visitors to have their own privacy. Windows across the back of the home have been double glazed to minimize noise from the rail line. With relatively minor adjustments the garage could be converted into a 3rd & 4th bedroom thus creating a true family home. Sketch plans and measurements have been drawn and are available upon request. A ramp at the

Price : \$ 260,000
Land Size : 3500 sqm
View : <https://www.wodongarealestate.com.au/sale/vic/north-eastern/chiltern/residential/house/5836736>



Measurements are approximate. Not to scale. For illustrative purposes only.