



2/26 Nightingale Avenue Wodonga VIC

2 1 2

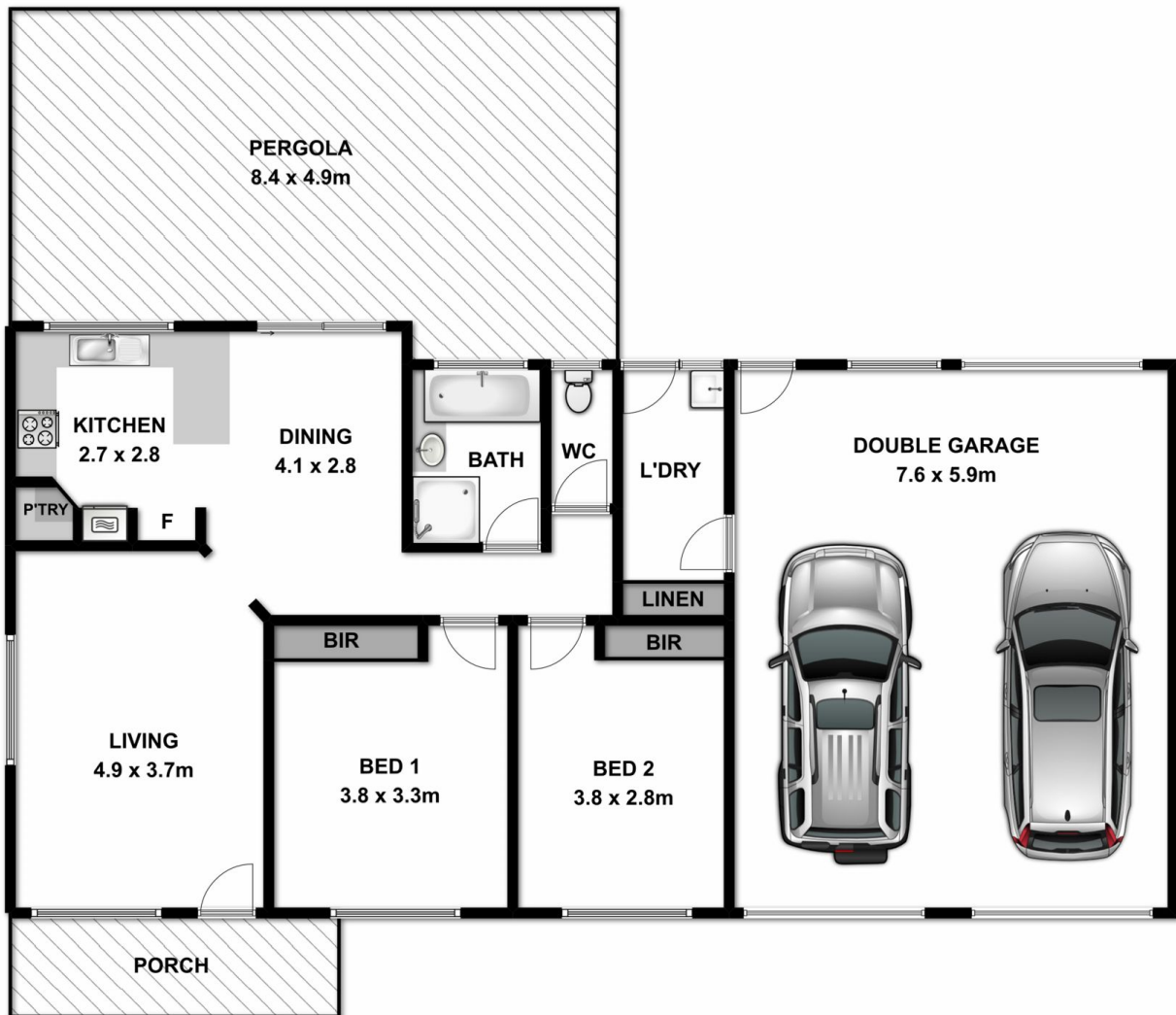
It is rare to find a freestanding unit featuring a double garage with secure internal access plus rear access to store extra vehicles etc. The home is currently let at \$210 per week under market to a long term tenant until August 2016 with current market rent at \$230-240 per week. The features include ducted cooling, gas wall furnace, bright kitchen with corner pantry and wall oven, both bedrooms with built in robes, large paved outdoor space and popular West Wodonga location close to all facilities. Note: Unit 1 is also for sale at \$195,000.

Price : \$ 205,000

View : <https://www.wodongarealestate.com.au/sale/vic/north-eastern/wodonga/residential/unit/5836738>



Clinton Harvey
0260 561 888



Meaurements are approximate. Not to scale. For illustrative purposes only.