



**19 Howqua Circuit Wodonga VIC**

3 1 2

Situated in a very desirable estate of Wodonga, this property represents true bricks and mortar investing. Securely leased until September 2016 at \$290 per week, this family friendly home offers space and comfort in a quality location.

The light and bright kitchen and meals area is the hub of the home, with a practical layout, offering electric cooking, an island bench and large pantry.

The generous adjacent meals area extends to the East facing under cover outdoor entertaining area, with enough space for all the family can come together.

All three bedrooms feature built in robes and are serviced by the central bathroom.

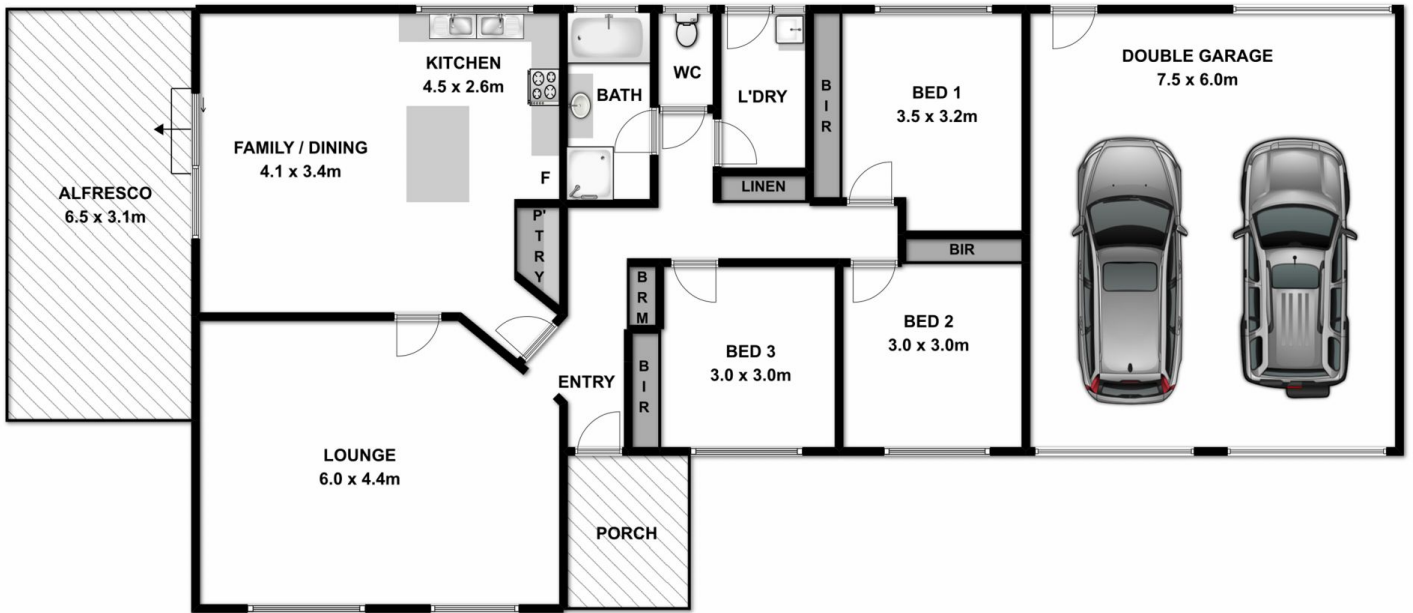
Set on an approx. 812m2 block with a double lock up garage with a rear roller door plus additional side access.

This property ticks many boxes, inspect and make an offer.

**Price** : \$ 260,500

**Land Size** : 812 sqm

**View** : <https://www.wodongarealestate.com.au/sale/vic/north-eastern/wodonga/residential/house/5836741>



Measurements are approximate. Not to scale. For illustrative purposes only.