



6 Wilca Way Wodonga VIC

5 2 2

Kept private by lush gardens and high fencing, this five bedroom beauty occupies over 1400m² on a quiet street in tightly held Sanctuary Gardens Estate.

Fantastic for the family, this home offers comfortable interiors, enticing entertaining areas and an incredible outdoor "Park Like" space.

All five bedrooms are generous in size and feature built in robes and ceiling fans. The master bedroom has its own ensuite and is separate from the minor bedrooms for privacy.

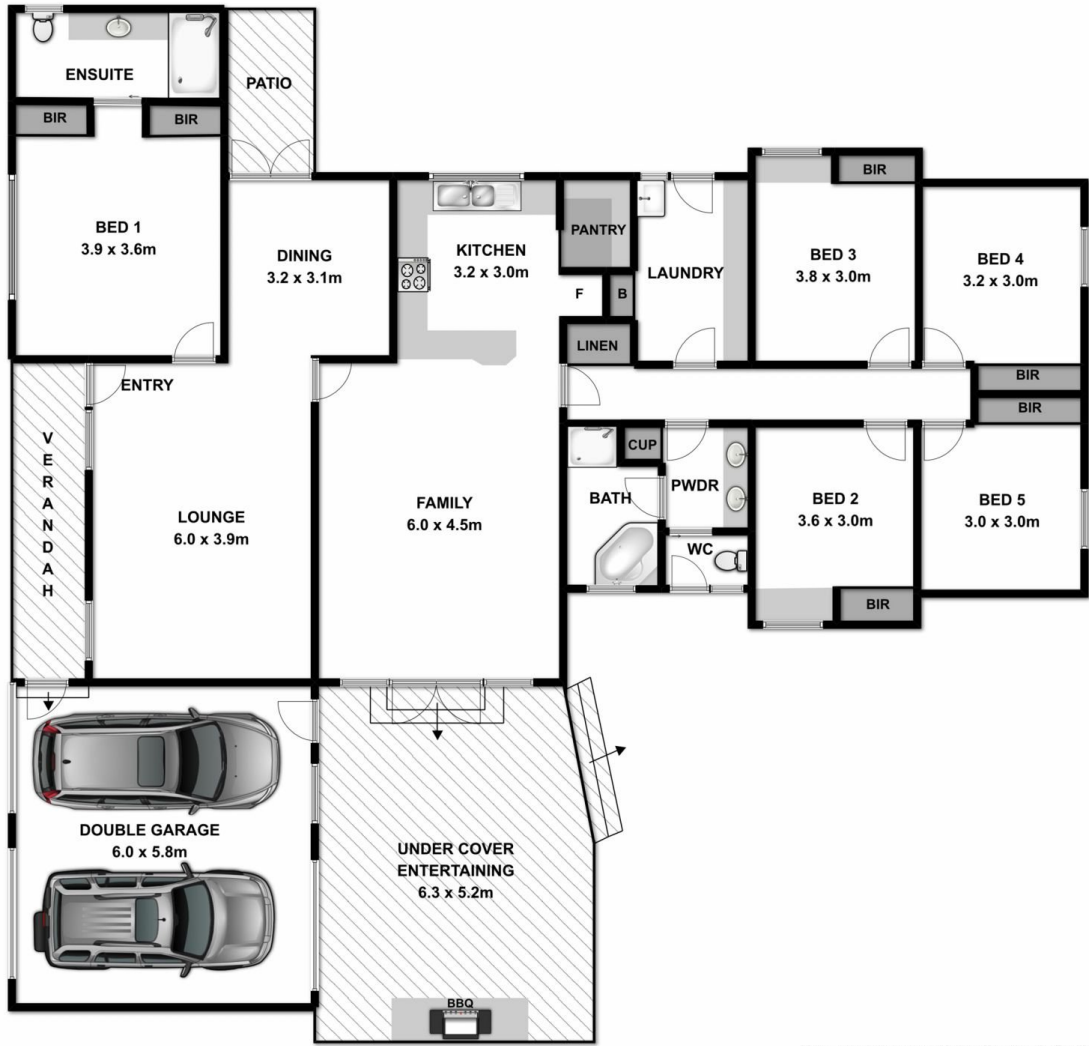
With a practical central kitchen consisting of a free standing 900mm gas cooker, walk in pantry, dishwasher and plenty of bench space.

Offering all-year comfort via both ducted heating and

Price : \$ 395,000

Land Size : 1420 sqm

View : <https://www.wodongarealestate.com.au/sale/vic/north-eastern/wodonga/residential/house/5836747>



Measurements are approximate. Not to scale. For illustrative purposes only.