



**wodonga real estate  
bestagents**



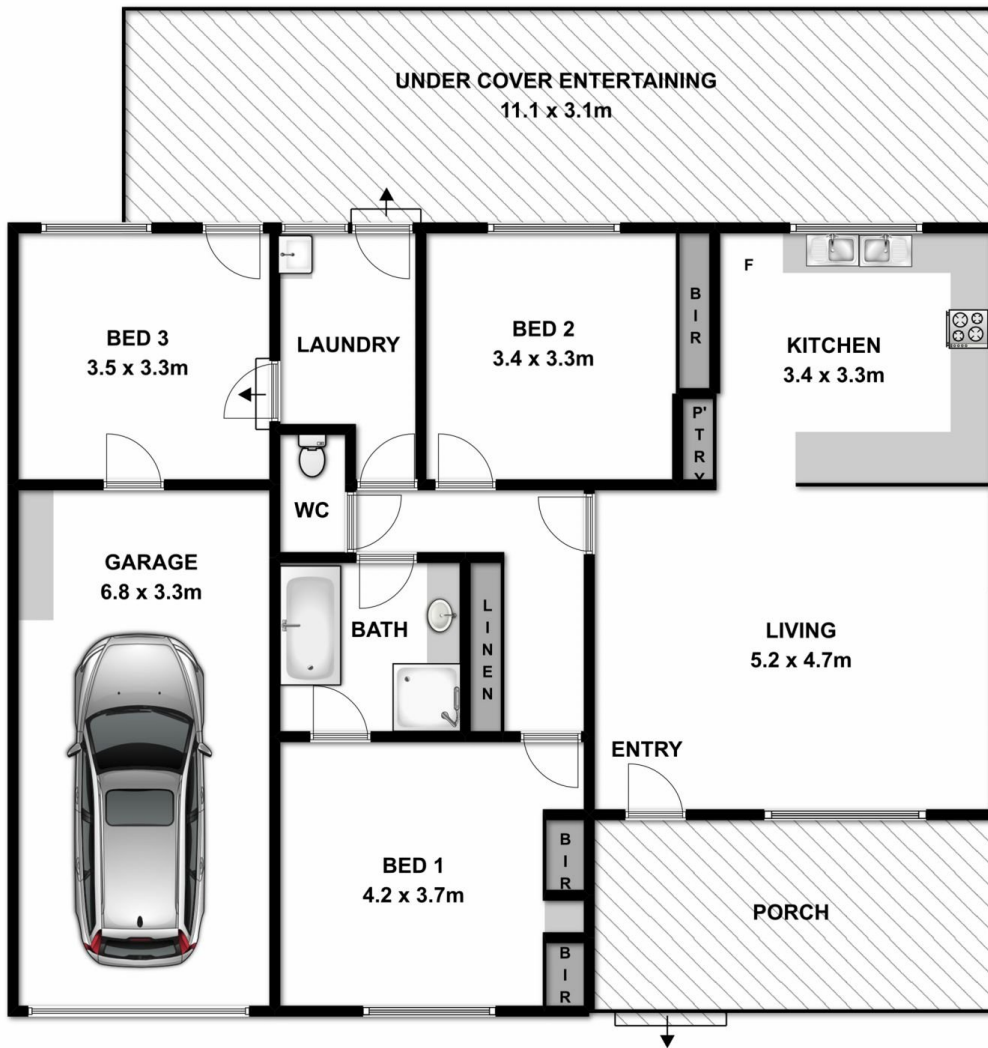
**2/4 Serpentine Avenue Wodonga VIC**

**2** **1** **2**

Located in West Wodonga close to La Trobe University and Wodonga TAFE is this great sized unit. Offering two large bedrooms with built in robes plus a study. Offers two-way bathroom and good size living area with Northerly aspect. Other features include good size yard, single lock up garage and additional parking area. Needs some TLC however offers a great rental opportunity.

**Price** : \$ 170,000

**View** : <https://www.wodongarealestate.com.au/sale/vic/north-eastern/wodonga/residential/unit/5836748>



Measurements are approximate. Not to scale. For illustrative purposes only.