



3 Pinkerton Court Wodonga VIC

3 2 2

Are you looking for a family friendly home in a quality location?

This three bedroom family home is situated in a desirable Willow Rise Estate in a quiet court.

Featuring generous proportions with a large timber kitchen, tiled family meals area and a generous formal lounge. With some recent updates to the paint and carpet this home presents fresh and modern.

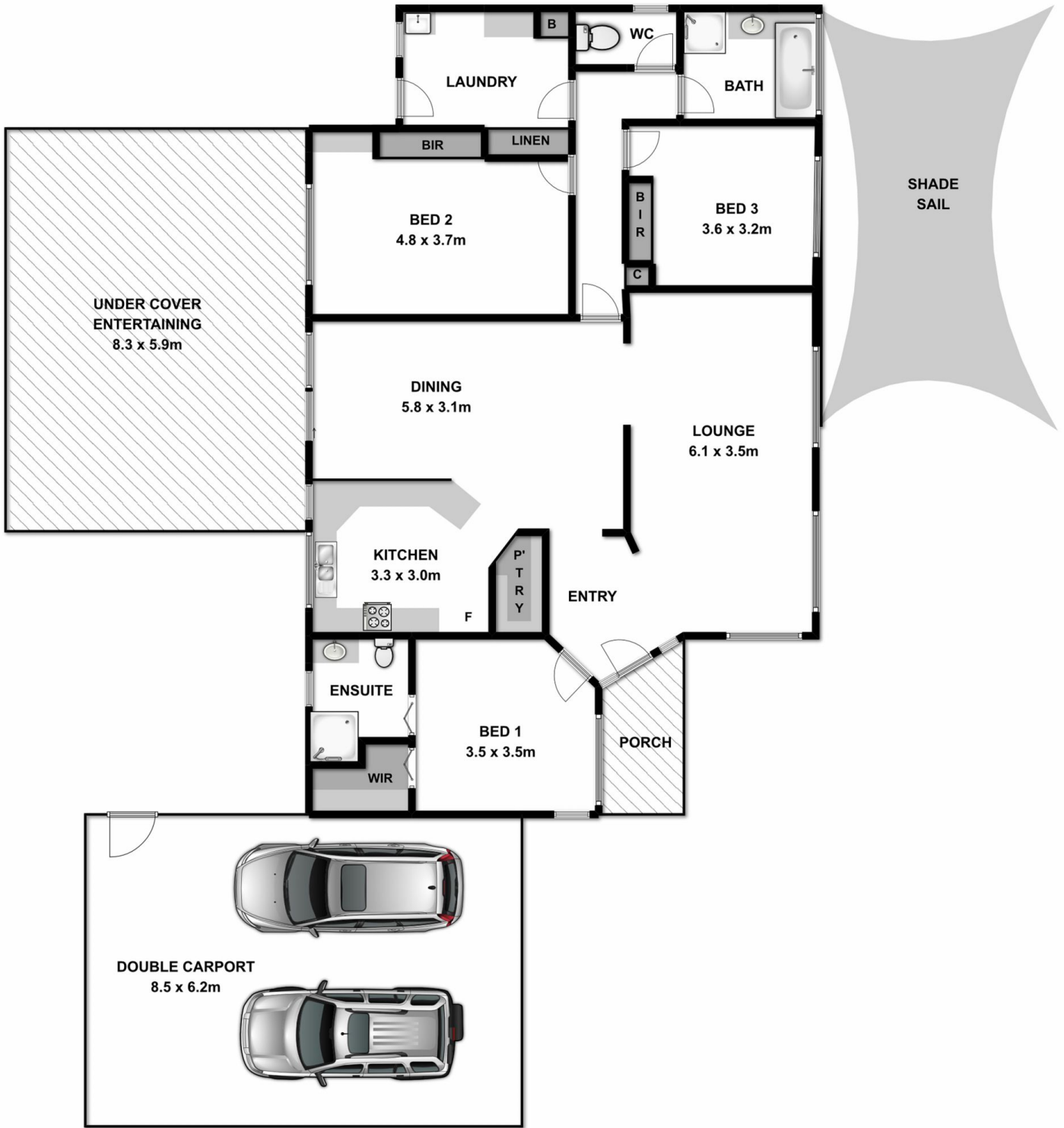
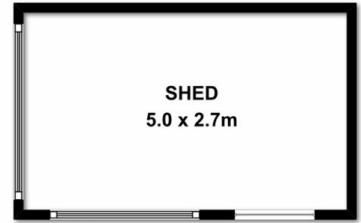
All three bedrooms have built in robes, master with a walk in and an ensuite.

Outside the quality continues, with a large pitched roof entertaining area with pattern paved flooring and a fully landscaped rear yard, complete with rear access and an approx. 4x 5 mt workshop, all set on a very useable 777m² approx block.

Price : \$ 339,000

Land Size : 777 sqm

View : <https://www.wodongarealestate.com.au/sale/vic/north-eastern/wodonga/residential/house/5836767>



Measurements are approximate. Not to scale. For illustrative purposes only.