



8/2 Bowman Court Wodonga VIC

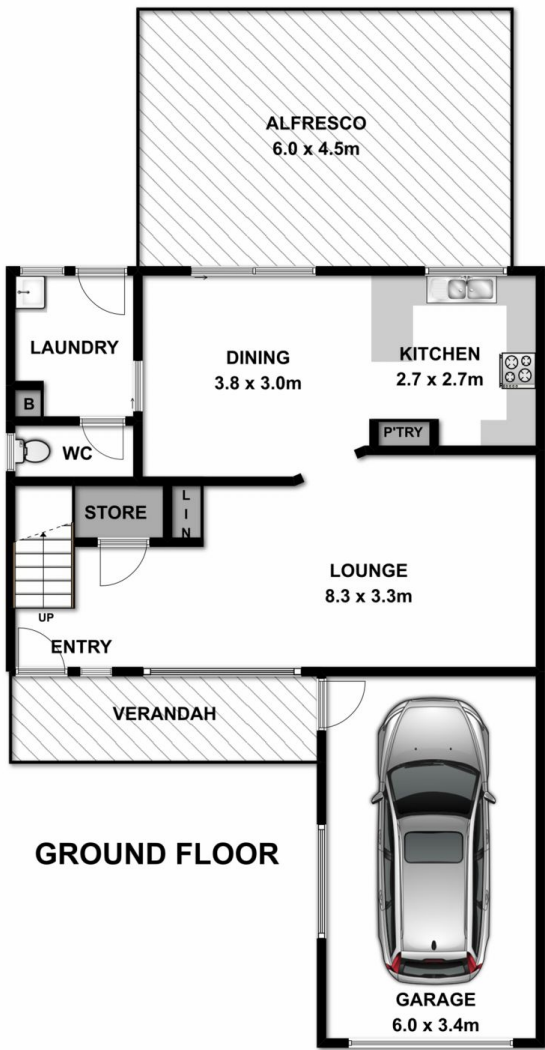
2 1 1

This quiet and private townhouse keeps giving wholly with features inside and outside plus a smart update internally throughout. The quality townhouse comprises-
 A very practical layout/floorplan with upstairs an additional living/utility area central to the two bedrooms
 Upstairs balconies to both bedrooms offering views, main bedroom with walk in robe
 Large main bathroom with spa, two toilets one each both upstairs and downstairs
 Comforts of gas wall furnace and ducted evaporative cooling
 Sensational outdoor area accompanied by spacious 359m2 low maintenance back yard
 Located so conveniently close to shops, schools, leisure centre, transport and more
 For investors expected rental return of \$275-280 per week

Price : \$ 245,000
Land Size : 359 sqm
View : <https://www.wodongarealestate.com.au/sale/vic/north-eastern/wodonga/residential/townhouse/5836776>



Clinton Harvey
0260 561 888



GROUND FLOOR



FIRST FLOOR

Measurements are approximate. Not to scale. For illustrative purposes only.