



22 Klim Street Wodonga VIC

3 2 2

This brand new home situated in the new and popular Riverside Estate offers the full turn key package.

Offering wonderful low maintenance living suiting first home buyers, downsizers and retirees this home has a high standard of fixtures.

Three good size bedrooms, master with walk in robe and en-suite. Built in robes to the two other bedrooms.

Light filled open plan kitchen with walk in pantry, stainless steel appliances with dishwasher and 900mm oven and gas hot plates.

Neutral tones allowing you to add your finishing touches

Ducted heating and evaporative cooling

Undercover alfresco dining area

Double lock up garage with internal access, remotes and a panel lift roller door.

Fully fenced and landscaped on a 396m² allotment.

Ready to move straight in.

Price : \$ 320,000

Land Size : 396 sqm

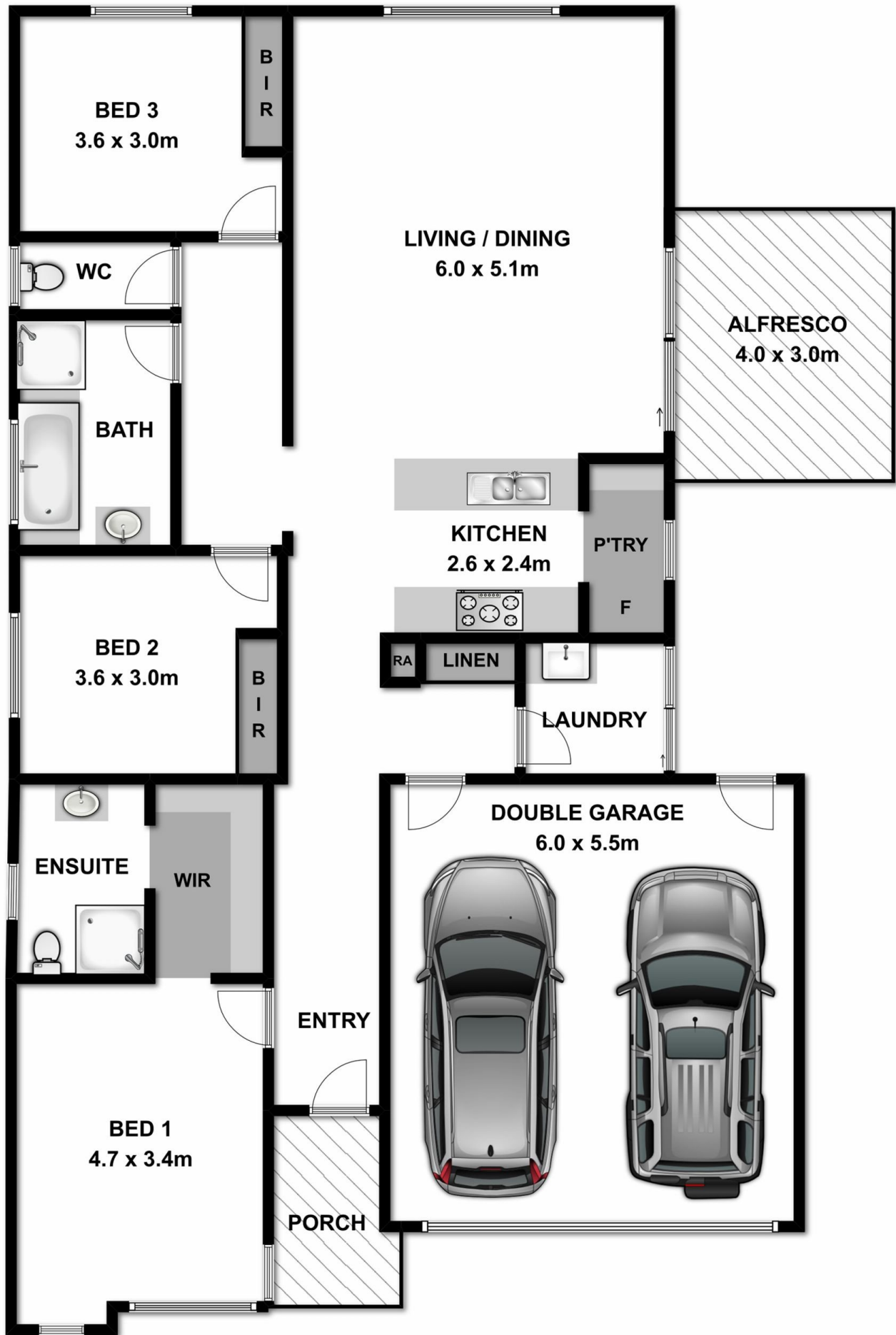
View : <https://www.wodongarealestate.com.au/sale/vic/north-eastern/wodonga/residential/house/5836780>



Margy Meehan
0260 561 888



Tom Sanderson
0260 561 888



Measurements are approximate. Not to scale. For illustrative purposes only.