



268 Beechworth Road Wodonga VIC

3 1 2

A gem of a large home located a short stroll to High Street and amongst medical centres, schools, sporting facilities and close to all facilities.

This lovingly cared for home with natural light would suit the retiree, first home buyer or renovator.

Offering two large bedrooms with the option to convert back living area to third bedroom. Functional kitchen and dining area, spacious lounge with timber framed windows & doors.

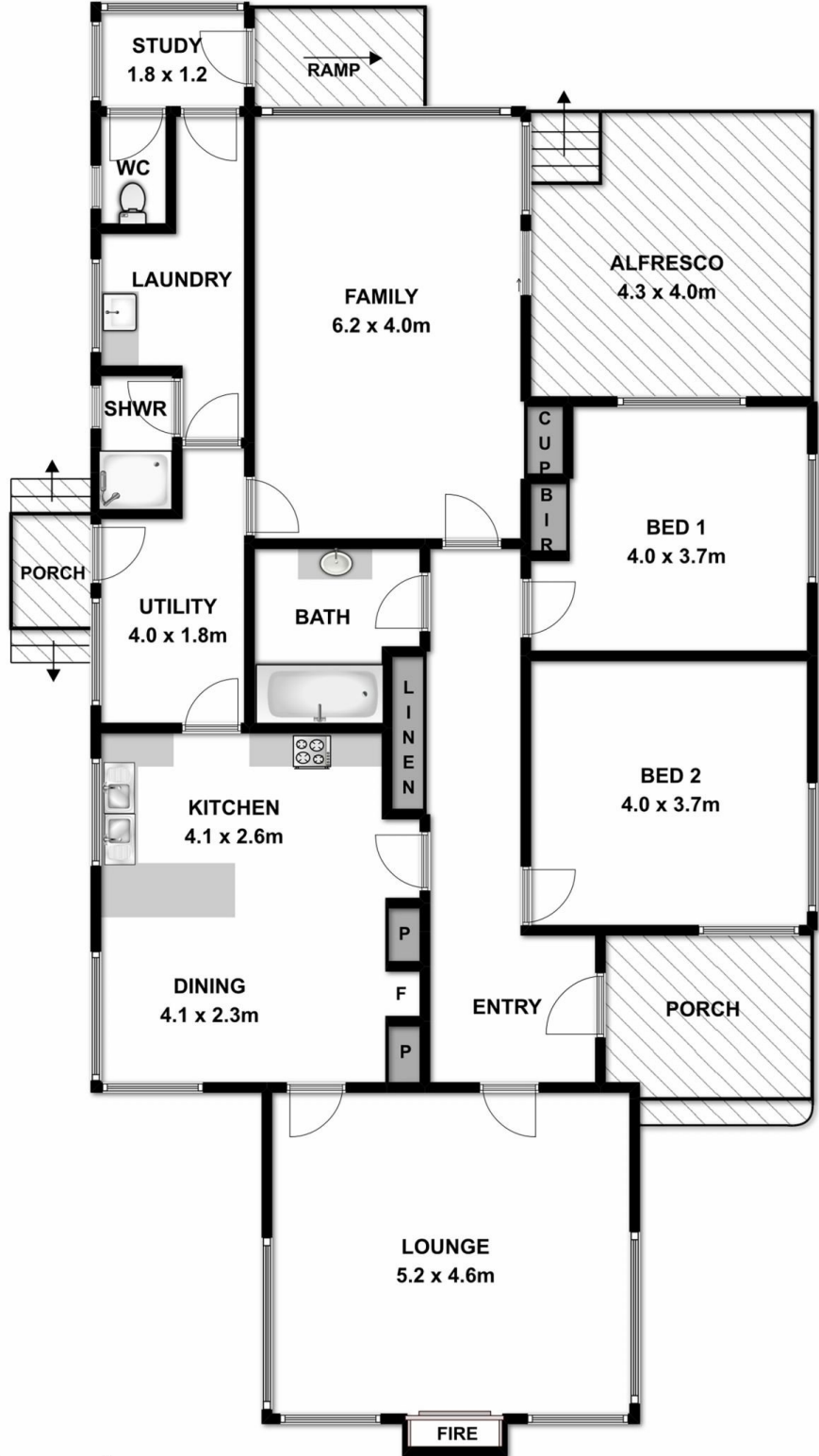
Beautiful low maintenance garden.

Many features of yesteryear to add your personal touch.

Price : \$ 266,000

Land Size : 779 sqm

View : <https://www.wodongarealestate.com.au/sale/vic/north-eastern/wodonga/residential/house/5836789>



Measurements are approximate. Not to scale. For illustrative purposes only.