



### 10 Riversdale Place Wodonga VIC

4 2 5

Peacefully placed, taking in rural surrounds, this quality built family home occupies over 4000m<sup>2</sup> in a highly regarded estate.

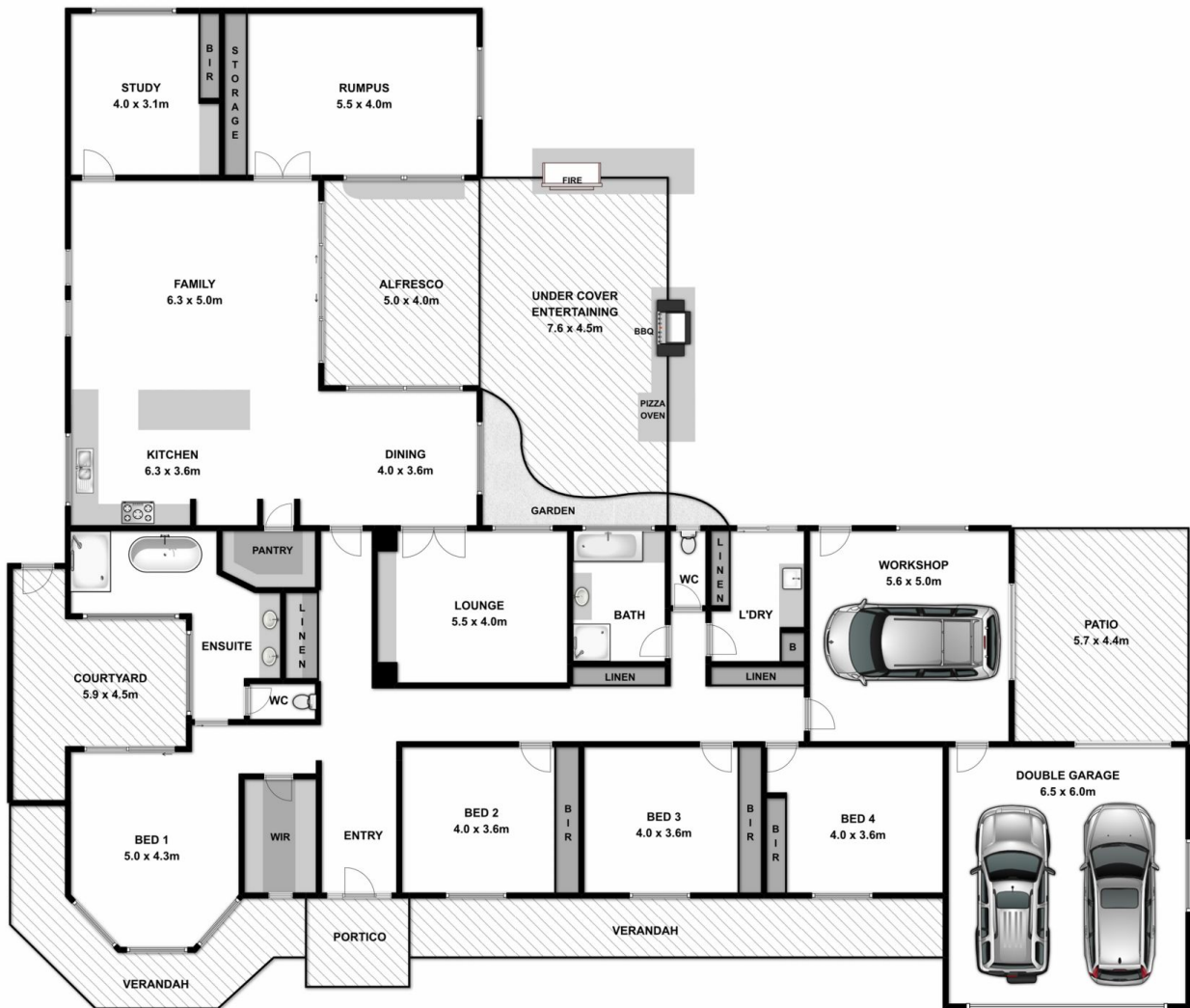
The quality of this Alatalo built home is obvious when you enter this spacious home, featuring a wide entry hallway, high ceilings and stunning timber flooring. Every space in this home is generous with a total of 49 squares under roof.

The master suite is grand (4.3x 5 metres) with a modern ensuite fitted with twin vanities, large hob bath and a single panel glass shower recess. The master and ensuite have access via glass sliding doors to a private enclosed terrace, giving this domain a truly "resort like" feel. There are three other king sized bedrooms with built in robes and ceiling fans plus a study with built in cabinets or fifth bedroom. With a practical layout, this home is ideal for a large family

**Price** : \$ 655,000  
**Land Size** : 4013 sqm  
**View** : <https://www.wodongarealestate.com.au/sale/vic/north-eastern/wodonga/residential/house/5836823>



**Tom Sanderson**  
**0260 561 888**



Measurements are approximate. Not to scale. For illustrative purposes only