



**27 Memorial Drive Wodonga VIC**

4 2 3

Without question located in one of the best streets in Wodonga this immaculately presented home is surrounded by quality properties and positioned in a quiet, family friendly neighbourhood. Offering a beautiful country outlook and a feeling of open space.

Light & bright with a north east aspect including eight & a half foot ceilings and a functional floor plan offering generous size rooms throughout.

The many quality features include-  
Two spacious living areas of formal lounge and tiled family room

A superb pitched pergola and magnificent pool to make summertime living a breeze

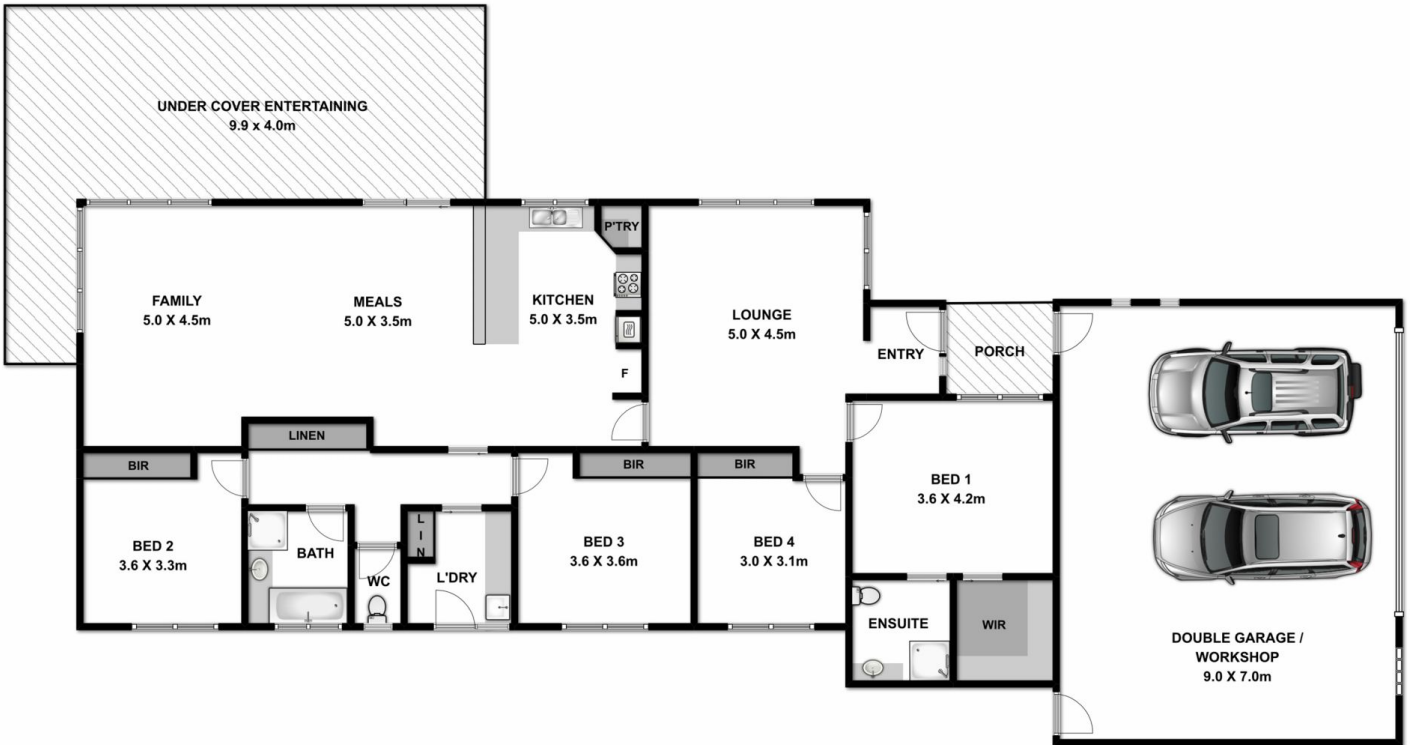
Comforts of gas ducted heating and evaporative ducted cooling throughout

Extra-large 9 x 7 metre remote lock up garage with workshop

**Price** : \$ 460,000  
**Land Size** : 819 sqm  
**View** : <https://www.wodongarealestate.com.au/sale/vic/north-eastern/wodonga/residential/house/5836838>



**Clinton Harvey**  
**0260 561 888**



Measurements are approximate. Not to scale. For illustrative purposes only.