



### 5 Kingfisher Drive Wodonga VIC

3 1 1

Situated in a highly sought after West Wodonga location, this North facing home will suit many buyers, whether you are a first home buyer, retiree wanting to downsize or an astute investor this property offers a great opportunity.

Set on an approximate 840m<sup>2</sup> block with double gate rear access, ideal to erect a large shed (STCA).

Featuring three bedrooms all with built in robes and ceiling fans, the master has direct access to the two way bathroom.

The formal L-shaped lounge and dining could be utilised as a dining space or as a study allowing the family room to be used as a true second living space.

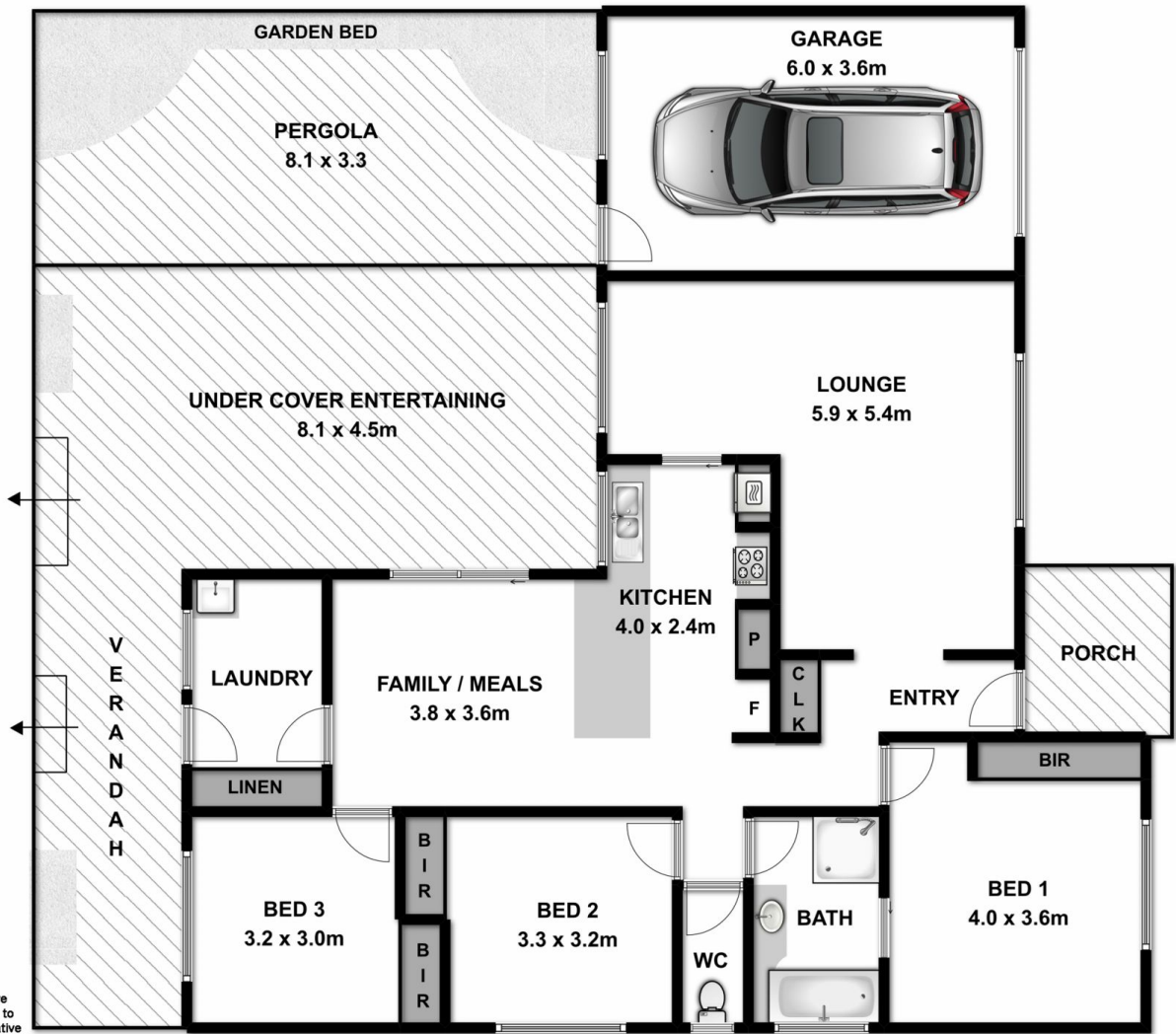
The kitchen offers gas cooking, good bench space and overlooks the large undercover entertaining area and fernery.

Previously tenanted for the past 15 years to the one tenant is testament to the area and the home.

**Price** : \$ 280,000

**Land Size** : 840 sqm

**View** : <https://www.wodongarealestate.com.au/sale/vic/north-eastern/wodonga/residential/house/5836840>



Measurements are approximate. Not to scale. For illustrative purposes only.