



**wodonga real estate
bestagents**



33 Kyle Court Wodonga VIC

3 **2** **2**

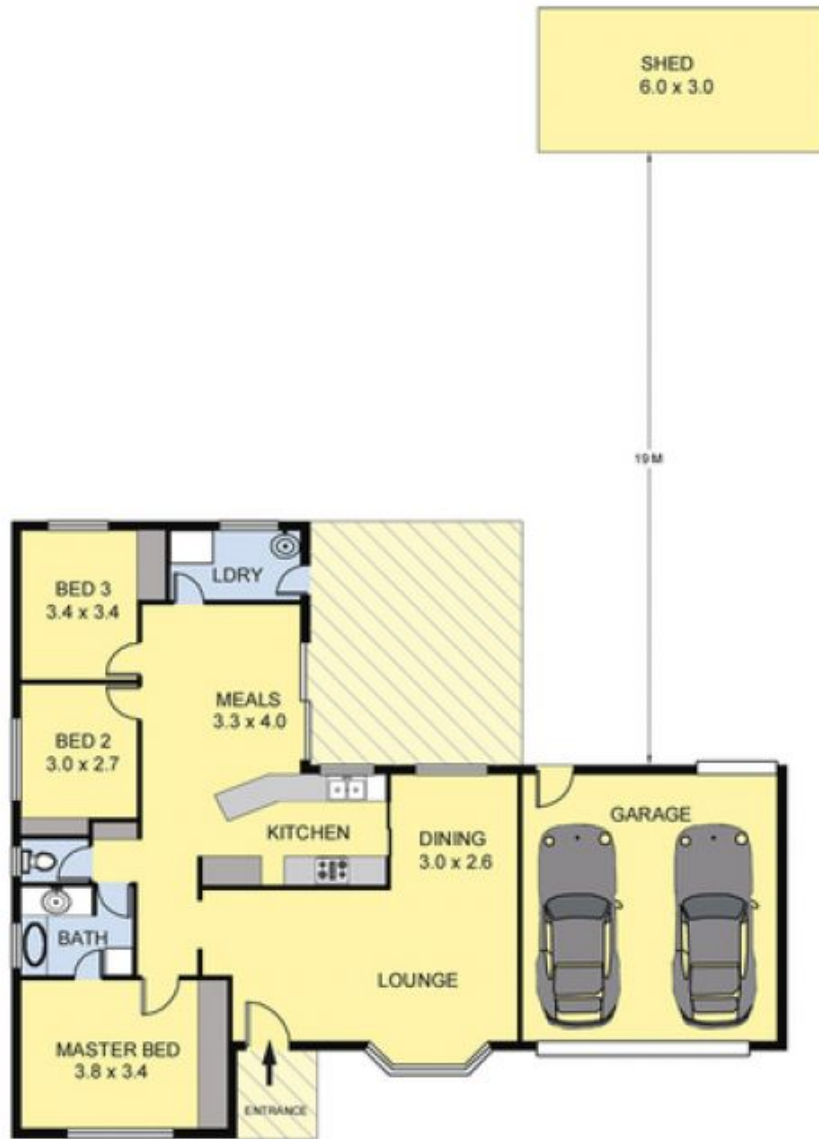
Price : \$ 285,000

Land Size : 783 sqm

View : <https://www.wodongarealestate.com.au/sale/vic/north-eastern/wodonga/residential/house/5836936>



Tom Sanderson
0260 561 888



Scale in metres. Indicative only. Dimensions are approximate.
 All information contained herein is gathered from sources we believe to be reliable. However, we cannot guarantee its accuracy and interested persons should rely on their own enquiries.

AREA	
LIVING	: 105.00 sq.m(Approx)
GARAGE/SHED/ENTRANCE	: 50.00 sq.m(Approx)
TOTAL	: 155.00 sq.m(Approx)



33 Kyle Court