



**wodonga real estate  
bestagents**



**2/254 Beechworth Road Wodonga VIC**

**2** **1** **1**

This brilliant north facing unit is spoilt for choice.

So central to shops, schools, transport, medical services, walk to High Street or just smell the coffee brewing at nearby cafes.

Featuring open plan living with large lounge, 2015 installed split system, in floor heating and lock up garage with remote.

Simply a fantastic position.

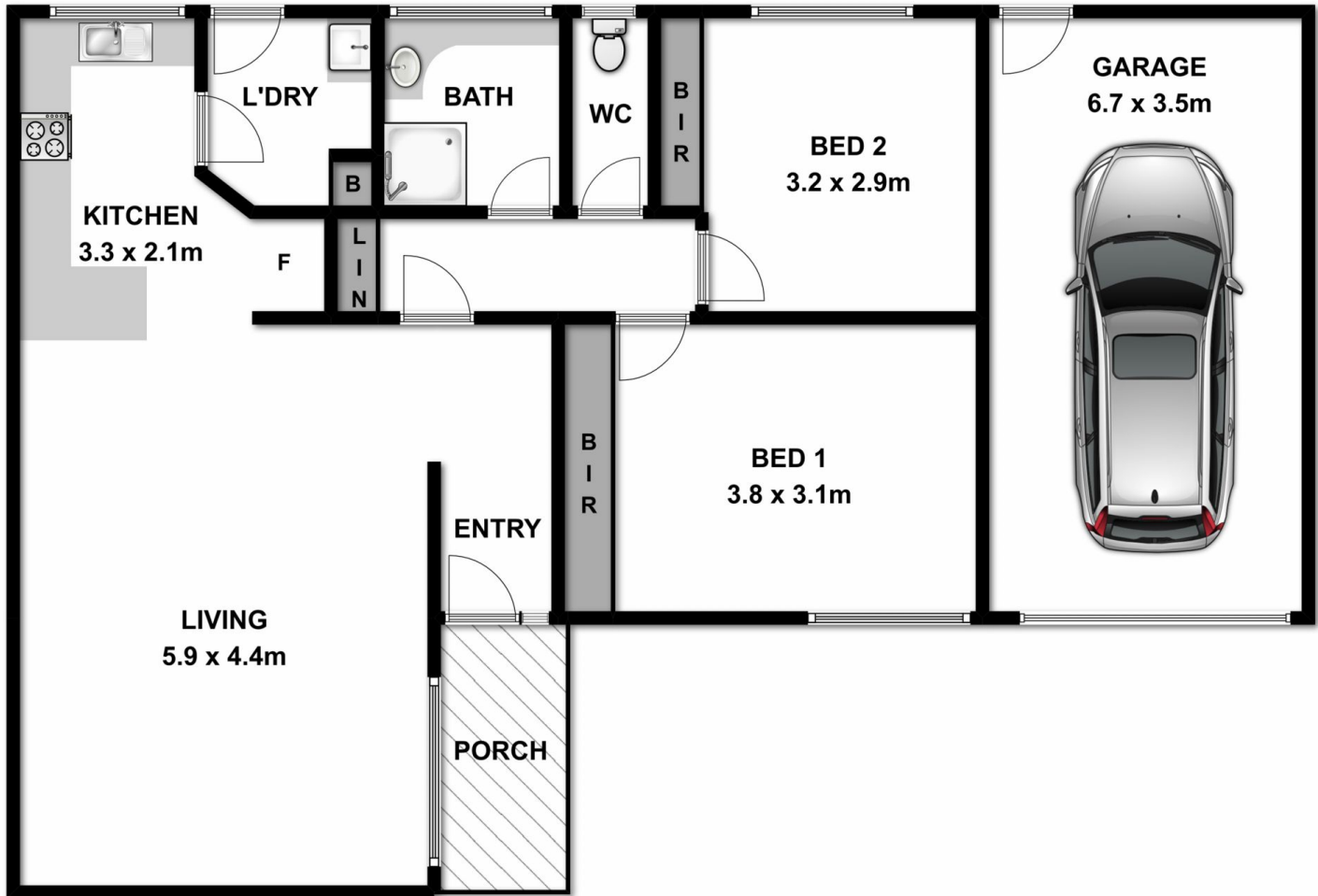
**Price** : \$ 197,500

**Land Size** : 149 sqm

**View** : <https://www.wodongarealestate.com.au/sale/vic/north-eastern/wodonga/residential/unit/5836937>



**Clinton Harvey**  
**0260 561 888**



Measurements are approximate. Not to scale. For illustrative purposes only.