



370 Beechworth Road Wodonga VIC

3 2 2

This immaculate ex-display home, provides a central location to all the modern conveniences of life. Within walking distance to shops, cafes, sporting facilities and public transport, here is a home with a touch of class.

The smart floor plan is complimented by light bright colours throughout, with quality added extras of a display home.

The central kitchen features caesarstone benchtops, walk-in pantry and well-appointed appliances, which opens out through double sliding doors to the outdoor alfresco.

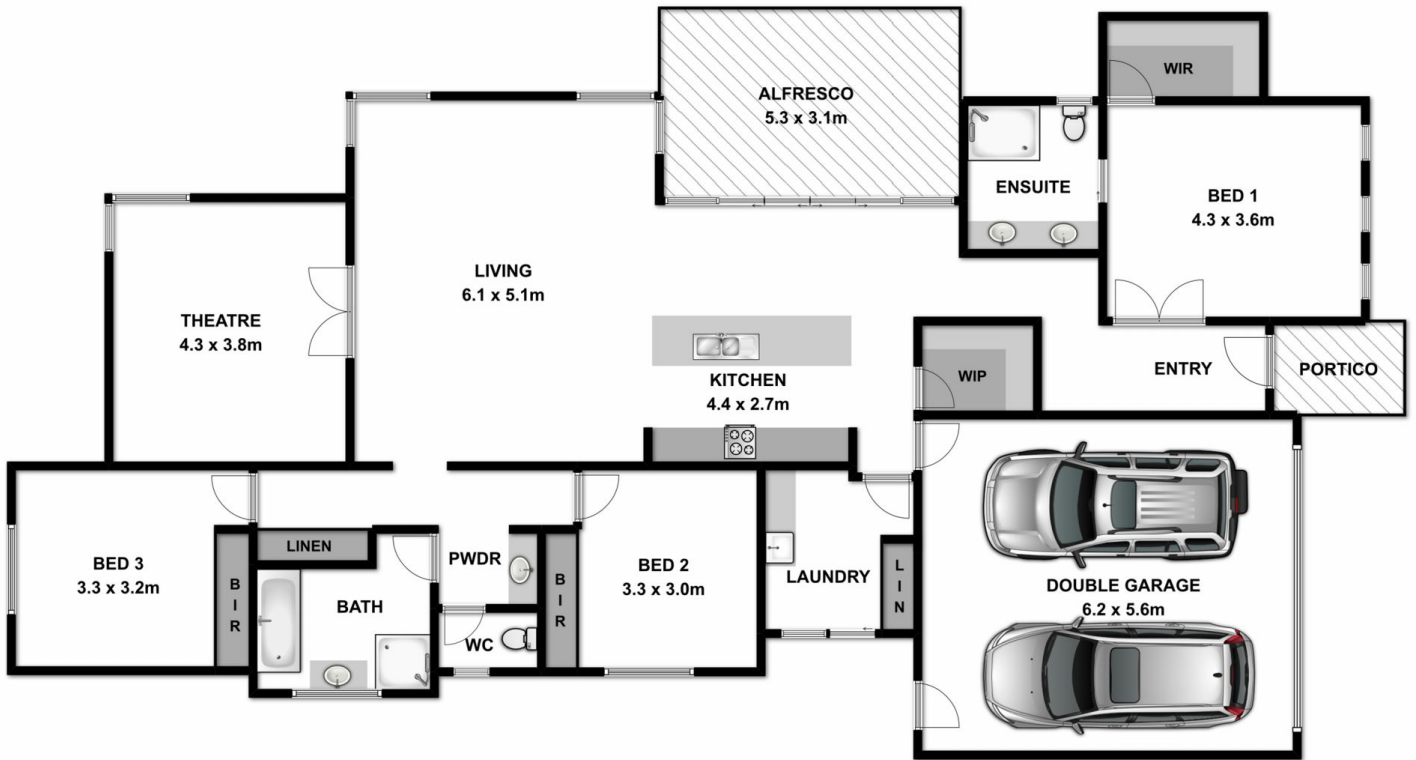
The living area offers ample room for both family & dining, plus the accompanying Theatre room, provides the 2nd space which could alternatively be utilized as an oversized study or a 4th bedroom if desired.

The ensuite to the main bedroom is complete with double basins, plus a walk in robe with plenty of space for her extra shoes.

The secure low maintenance backyard also has space for

Price : \$ 370,000

View : <https://www.wodongarealestate.com.au/sale/vic/north-eastern/wodonga/residential/house/583698>
1



Measurements are approximate. Not to scale. For illustrative purposes only.