



10 Main Street Chiltern VIC

3 2 2

This picture perfect home only 400 meters walking distance to the village of Chiltern is full of character and appeal.

This immaculately presented property has been lovingly maintained, with additions of new carpet, painting, dishwasher, ducted cooling, gas heating and a solar electricity system, making this home not just beautiful but comfortable & economical.

Relax on the full length verandah, overlooking the lovely garden, fitted with bistro blinds to suit all weather conditions.

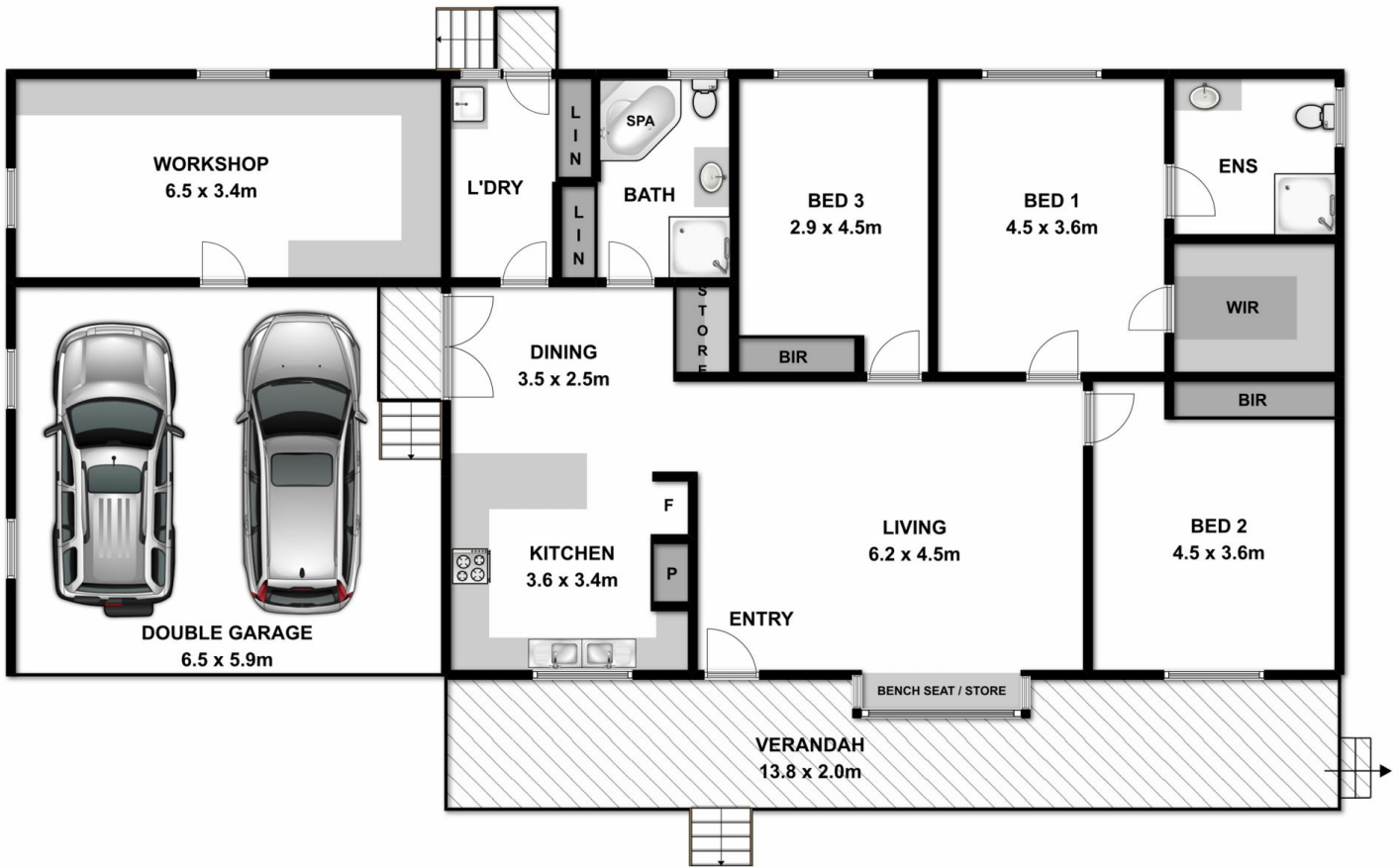
The home consists of three queen sized bedrooms, the master with a generous walk in robe and ensuite, an open plan living and dining room featuring solid timber Murray Pine flooring, a feature antique sash window and dado wall trims. The light drenched kitchen has ample storage and bench space as well as a walk in pantry.

The private cottage style garden on a generous 720m2

Price : \$ 270,000
Land Size : 726 sqm
View : <https://www.wodongarealestate.com.au/sale/vic/north-eastern/chiltern/residential/house/5836995>



Tom Sanderson
0260 561 888



Measurements are approximate. Not to scale. For illustrative purposes only.