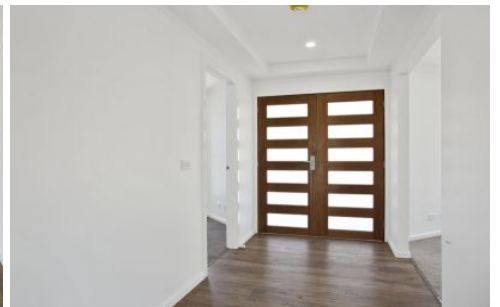




Grass added for display



**29 Brewer Drive Wodonga VIC**

4 2 2

Situated in a commanding position, this brand new home offers quality and comfort.

Light and bright throughout featuring queen sized bedrooms, the master suite with a substantial ensuite and walk in robe.

Featuring a formal lounge and informal living/meals area adjacent to the well equipped kitchen, fitted with stainless steel appliances and very stylish pantry with glass sliding doors.

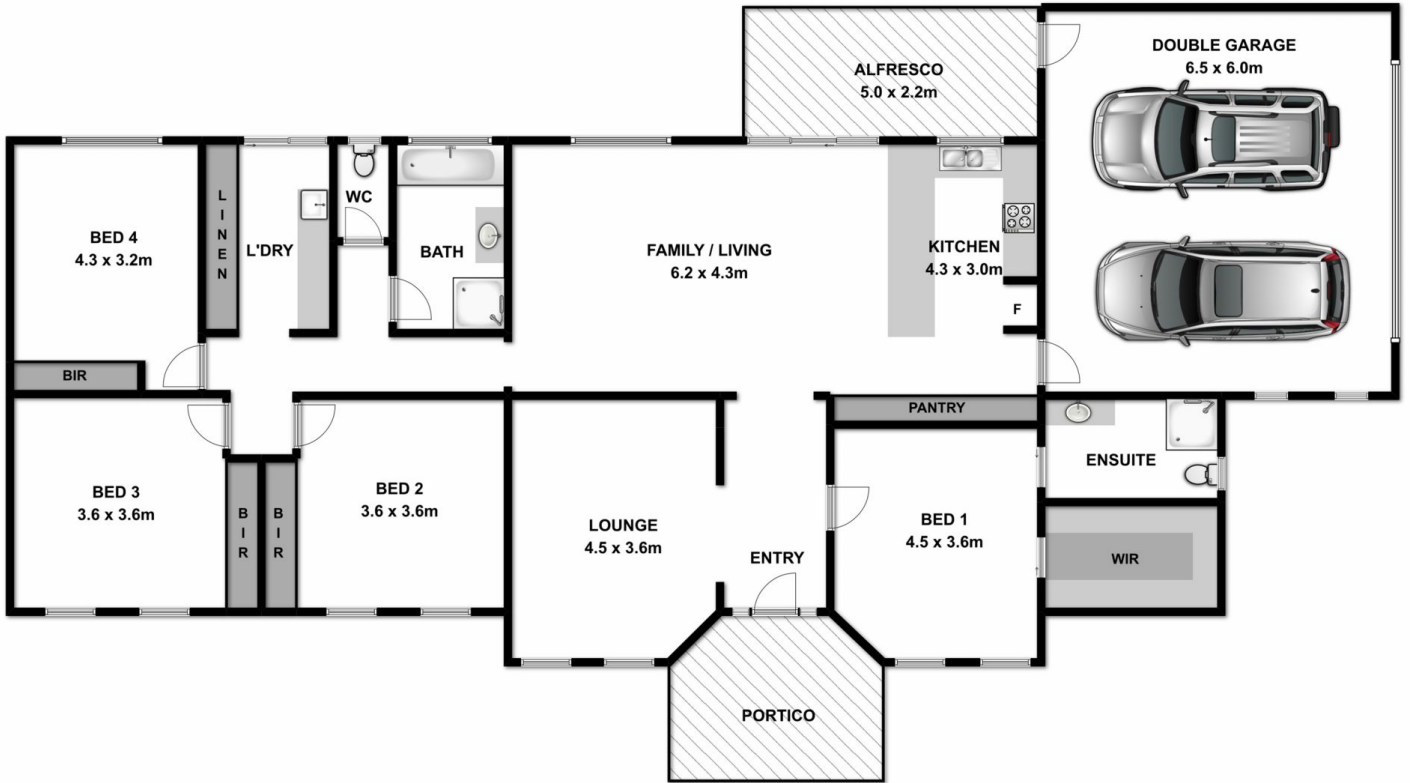
Set on an approximate 710m2 block with rear yard access to the very private back yard, that would accommodate a large caravan behind double gates ( to be fitted ).

With basic landscaping and lawn to finish the package Ready to occupy this brand new build could be yours for Christmas

**Price** : \$ 415,000

**Land Size** : 710 sqm

**View** : <https://www.wodongarealestate.com.au/sale/vic/north-eastern/wodonga/residential/house/5837000>



Measurements are approximate. Not to scale. For illustrative purposes only.