



20 Gurney Crescent Wodonga VIC

4 2 2

Masterfully positioned with a beautiful elevation and outlook, this brand new home offers fantastic side/rear access perfect for the caravan/boat or extra vehicles. A turn key finish with nothing to do, the builder just needs to add turf to the private & secure 653m2 allotment.

The many quality features include-

Large and open tiled family room and separate lounge

Four bedrooms with en-suite & walk in robe to master, built in robes to bedrooms 2-4

Comforts of gas ducted heating and evaporative cooling throughout

Great size outdoor alfresco/entertaining area

Oversize 6.64 x 6.0 metre double lock up garage with rear, remote and internal access

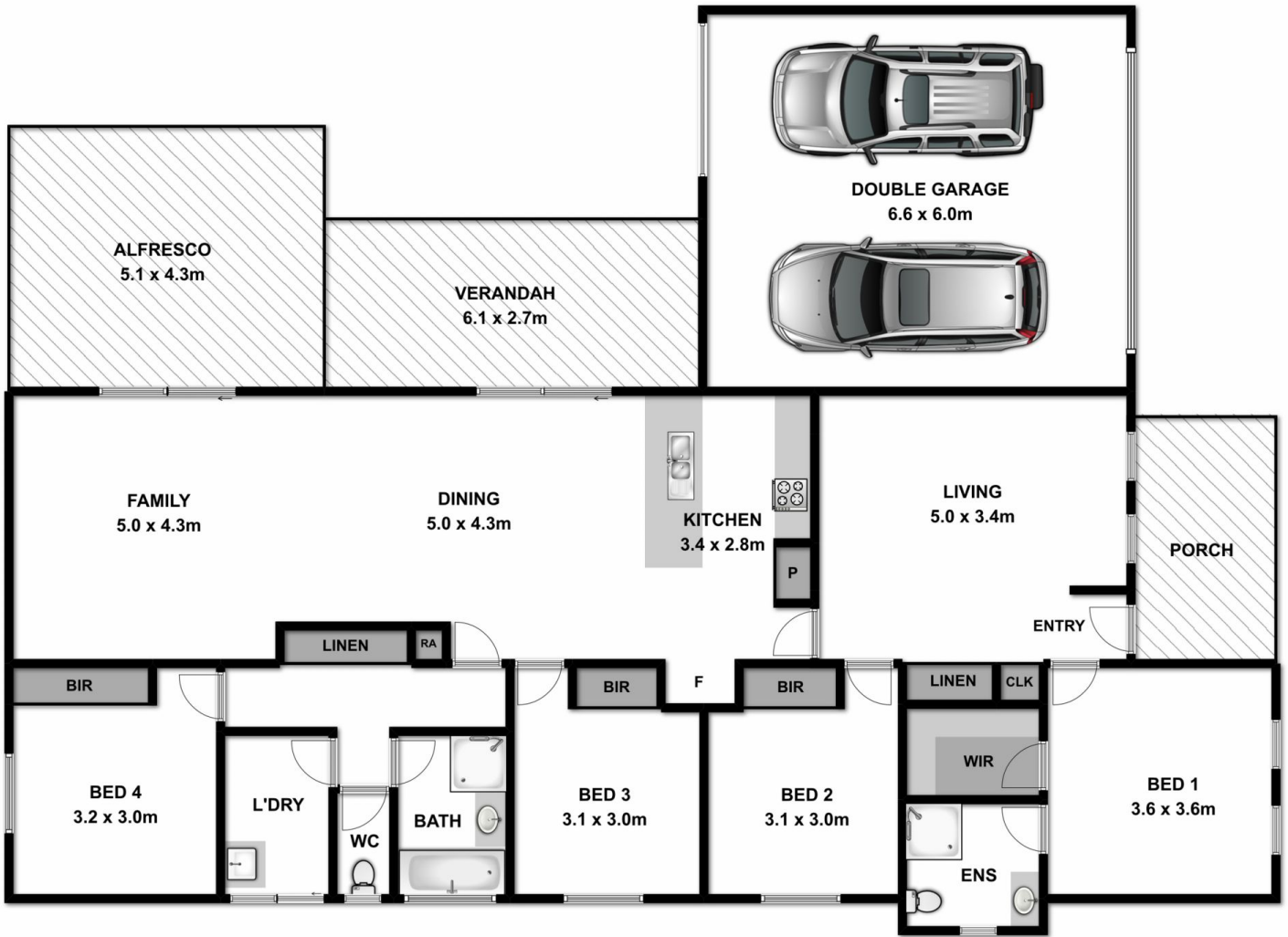
For investors expected rental return of \$380-400 per week

Popular location within walking distance to shops, medical facilities, waves aquatic centre, parks, schools and more

Price : \$ 379,000
Land Size : 653 sqm
View : <https://www.wodongarealestate.com.au/sale/vic/north-eastern/wodonga/residential/house/5837001>



Clinton Harvey
0260 561 888



Measurements are approximate. Not to scale. For illustrative purposes only.