



**28 Riverview Terrace Wodonga VIC**

4 2 2

Located in East Wodonga in an excellent street close to the Bandiana Freeway Link, Wodonga's home maker Centre and the CBD.

This four bedroom home is ideal for first home buyers, investors and down sizers.

All four bedrooms have robes, the master with a walk in robe and ensuite.

The neat & tidy kitchen offers gas cooking and overhead storage.

Set on a generous 680 plus block with double car accommodation and rear access to the 5 x 3 meter shed.

Currently tenanted or can be purchased with vacant possession.

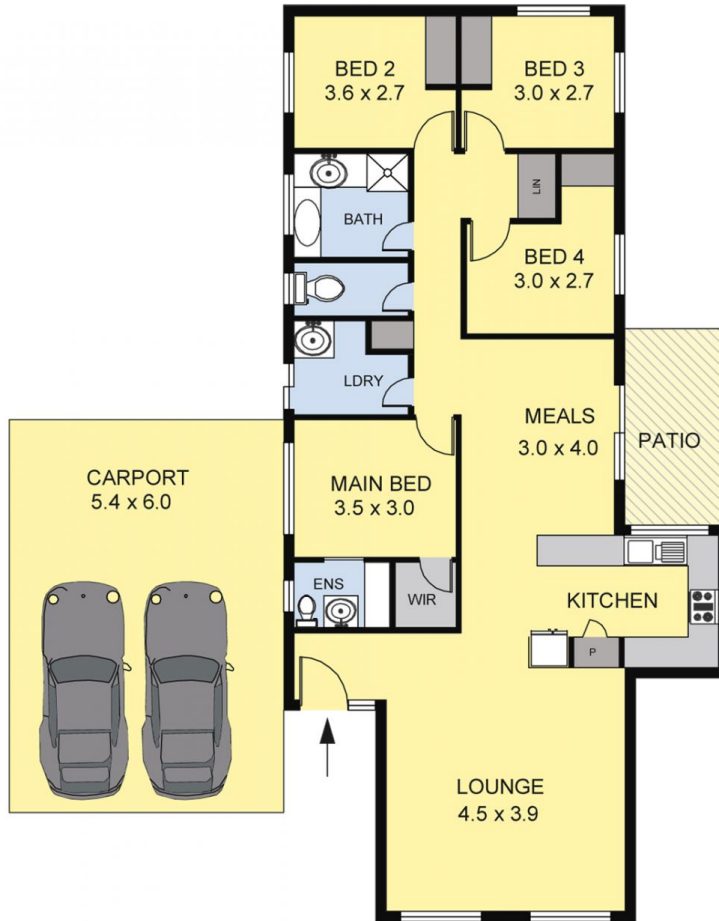
**Price** : \$ 275,000

**Land Size** : 684 sqm

**View** : <https://www.wodongarealestate.com.au/sale/vic/north-eastern/wodonga/residential/house/5837004>



**Tom Sanderson**  
0260 561 888



Scale in metres. Indicative only. Dimensions are approximate.  
 All information contained herein is gathered from sources we believe to be reliable. However we cannot guarantee its accuracy and interested persons should rely on their own enquiries.

**AREA**

LIVING : 120.00 sq.m(Approx)  
 PATIO/CARPORT : 39.00 sq.m(Approx)



# 28 RIVERVIEW TERRACE