

**245 Castle Creek Road Wodonga VIC**

2 1 6

Offering a relaxed rural lifestyle within 5 minutes of High Street, this comfortable 2-bedroom home is situated on approximately 4 acres.

The home has floating floorboards throughout and consists of two large bedrooms (master with built in robes) and a large lounge!

Functional kitchen with separate dining room. Heating and cooling is covered with split system units and a wood fire heater.

Step onto the full length north facing front veranda and relax on the deck with a beer or wine. Have breakfast in the dining room and see the sunlight cast shadows over the landscape and watch birds at play. In summer watch the echidna laze in a shallow water bowl or the wallaby drink from a bird bath.

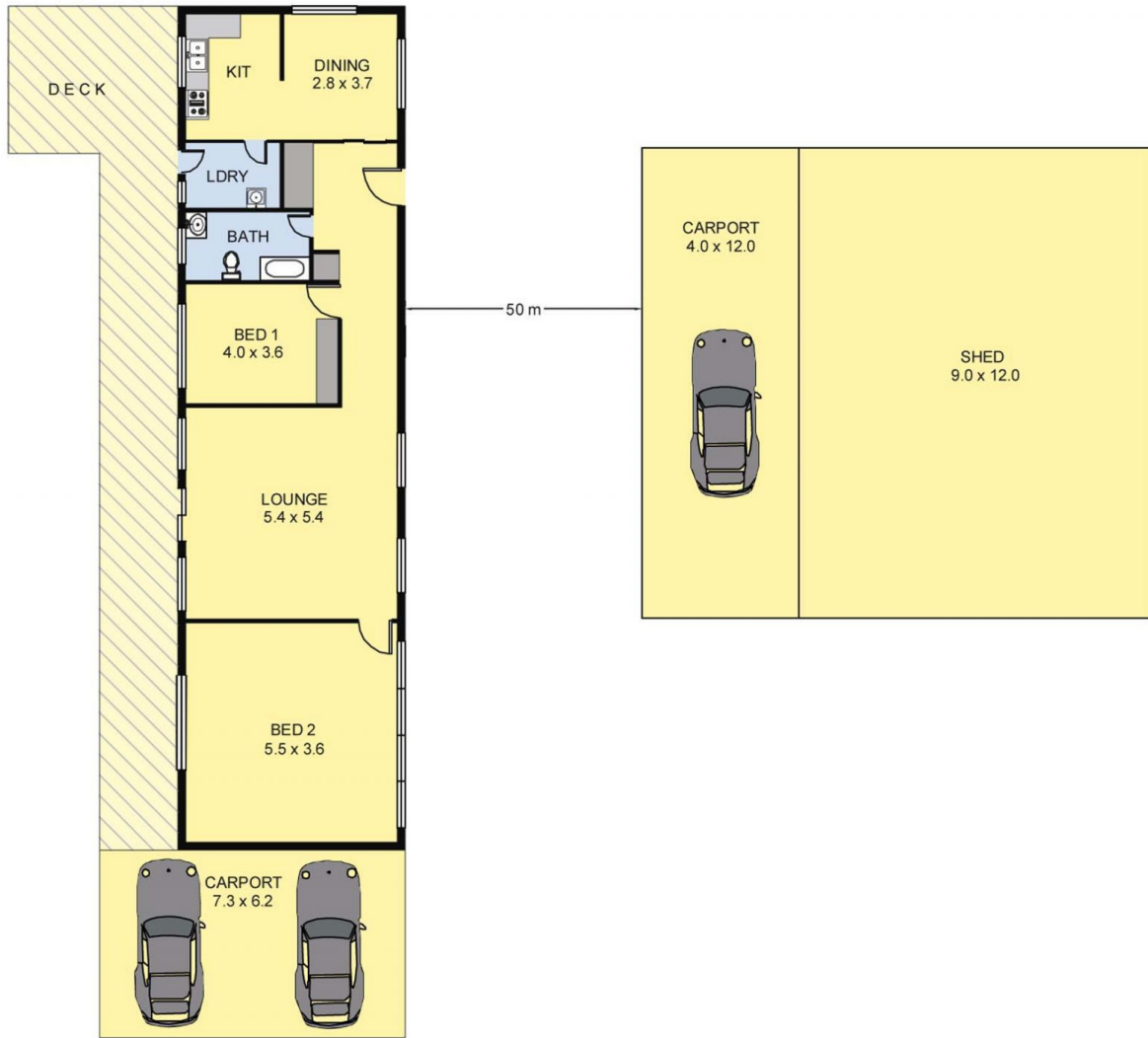
For the tradie, horse lover or collector this is a paradise.

A large 12 x 9m powered shed with a 9 x 4 m mezzanine

**Price** : \$ 379,000

**Land Size** : 4 Acres

**View** : <https://www.wodongarealestate.com.au/sale/vic/north-eastern/wodonga/residential/house/5837042>



Scale in metres. Indicative only Dimensions are approximate.  
 All information contained herein is gathered from sources we believe to be reliable. However we cannot guarantee its accuracy and interested persons should rely on their own enquiries.

AREA	
LIVING	: 130.00 sq.m(Approx)
CARPORT/ SHED	: 230.00 sq.m(Approx)
<b>TOTAL</b>	<b>: 360.00 sq.m(Approx)</b>



## 245 CASTLE CREEK ROAD